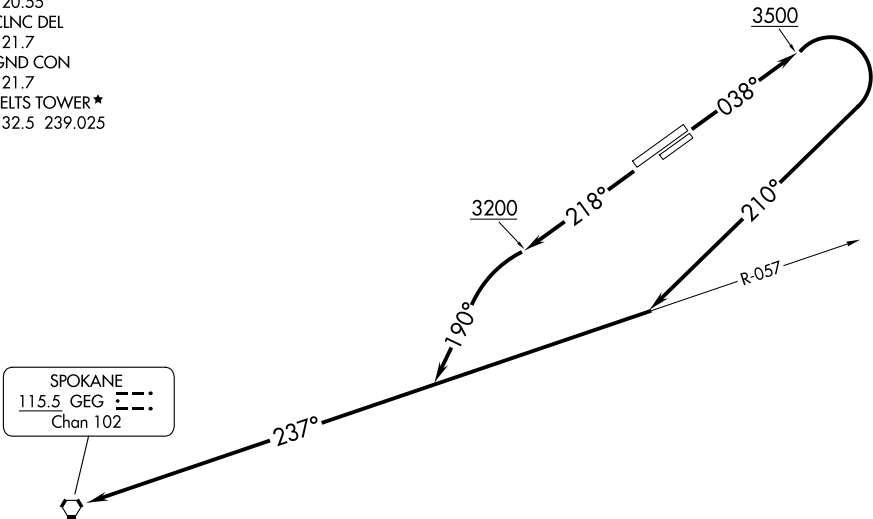
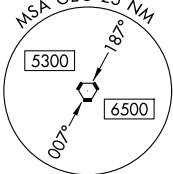


SPOKANE DEP CON
133.35 263.0
ATIS
120.55
CLNC DEL
121.7
GND CON
121.7
FELTS TOWER ★
132.5 239.025



TAKEOFF MINIMUMS

- Rwy 4L: Standard with minimum climb of 495’ per NM to 6000, or 2800-3 for VCOA.
- Rwy 4R: Standard with minimum climb of 485’ per NM to 6000, or 2800-3 for VCOA.
- Rwy 22L: Standard with minimum climb of 230’ per NM to 2800, or 2800-3 for VCOA.
- Rwy 22R: Standard with minimum climb of 250’ per NM to 2800, or 2800-3 for VCOA.



(CONTINUED ON FOLLOWING PAGE)

NOTE: Chart not to scale.

DEPARTURE ROUTE DESCRIPTION

TAKEOFF RUNWAYS 4L/R: Climb on heading 038° to 3500, then climbing right turn to heading 210° to intercept GEG VORTAC R-057 to GEG VORTAC, thence. . . .

TAKEOFF RUNWAYS 22L/R: Climb on heading 218° to 3200, then climbing left turn to heading 190° to intercept GEG VORTAC R-057 to GEG VORTAC, thence. . . .

VCOA ALL RUNWAYS: Obtain ATC approval for VCOA when requesting IFR clearance. Climb in visual conditions to cross Felts Fld at or above 4600, then on GEG R-057 to GEG VORTAC, thence...

. . . .cross GEG VORTAC at or above MCA/MEA for assigned route of flight.