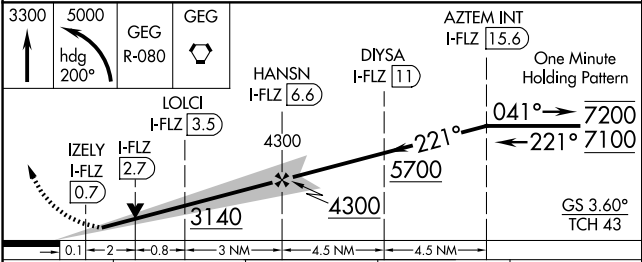
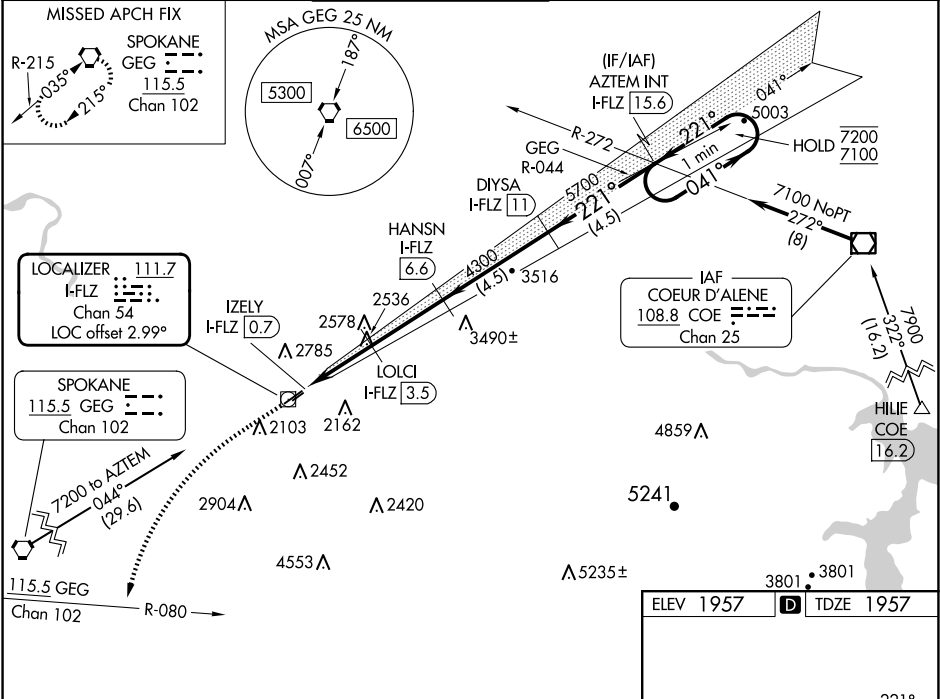


LOC/DME I-FLZ	APP CRS	Rwy Ldg	4499
111.7	221°	TDZE	1957
Chan 54		Apt Elev	1957

ILS or LOC RWY 22R  
FELTS FLD (SFF)

DME required.	MALSR	MISSED APPROACH: Climb to 3300 then climbing left turn to 5000 on heading 200° and GEG VORTAC R-080 to GEG VORTAC and hold.
<p>⚠ Circling NA northwest of Rwy 4L-22R. Circling Rwy 22L NA at night.</p> <p>Rwy 22R helicopter visibility reduction below ¾ SM NA. For inop ALS, increase SHLS Cat A/B/C visibility to ¾ SM, increase S-LOC Cat A visibility to 1 SM and Cat C visibility to 2 ½ SM.</p>	<p>⚠</p>	

ATIS 120.55	SPOKANE APP CON 133.35 263.0	FELTS TOWER ★ 132.5 (CTAF) 239.025	GND CON 121.7	CLNC DEL 121.7	UNICOM 122.95
----------------	---------------------------------	---------------------------------------	------------------	-------------------	------------------



CATEGORY	A	B	C	D
S-ILS 22R	2257-½ 300 (300-½)			NA
S-LOC 22R	2800-¾ 843 (900-¾)		2800-1⅞ 843 (900-1⅞)	NA
CIRCLING	2800-1¼ 843 (900-1¼)	2800-1½ 843 (900-1½)	3100-3 1143 (1200-3)	NA

