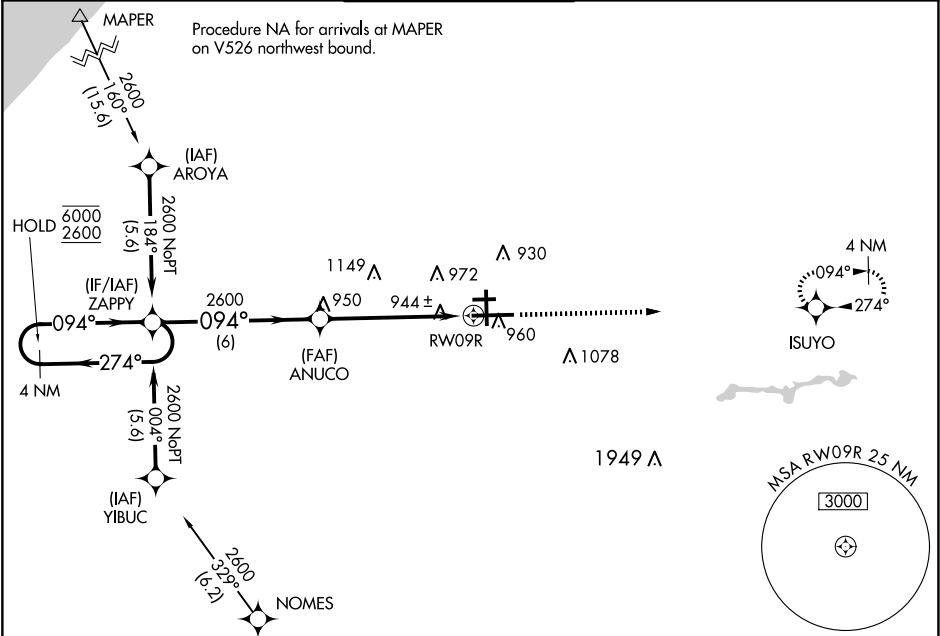


WAAS CH 60908 W09B	APP CRS 094°	Rwy Ldg 8412 TDZE 790 Apt Elev 798
----------------------------------------	------------------------	---------------------------------------------------------------

RNAV (GPS) RWY 9R

SOUTH BEND INTL (SBN)

RNP APCH - GPS.			MALSF	MISSED APPROACH: Climb to 2600 direct ISUYO and hold.
For uncompensated Baro-VNAV systems, LNAV/VNAV NA below -19°C or above 54°C. Circling Rwy 27R NA at night. Rwy 9R helicopter visibility reduction below RVR 4000 NA. For inop ALS, increase LPV all Cats visibility to RVR 5500 and LNAV Cat C/D to RVR 6000.				
ATIS 120.675	SOUTH BEND APP CON ★ 118.55 257.8	SOUTH BEND TOWER ★ 135.675 (CTAF) 0 257.8	GND CON 121.7	CLNC DEL 121.9



4 NM Holding Pattern		ZAPPY	ANUCO	2600	ISUYO
6000 2600		274°	094°	1.1 NM to RWY 9R	
GP 3.00° TCH 55		2600			
		6 NM	4.4 NM	1.1 NM	
CATEGORY	A	B	C	D	
LPV DA	1135/40		345 (400-3/4)		
LNAV/VNAV DA	1222/50		432 (500-1)		
LNAV MDA	1200/40	410 (500-3/4)	1200/50	410 (500-1)	
CIRCLING	1280-1	482 (500-1)	1440-1 3/4 642 (700-1 3/4)	1500-2 1/4 702 (800-2 1/4)	

ELEV 798

TDZE 790

HIRL Rwy 9R-27L

MIRL Rwy 18-36

MIRL Rwy 9L-27R