

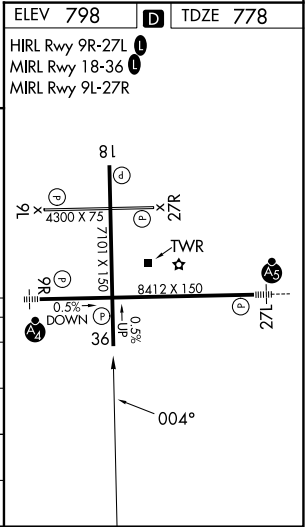
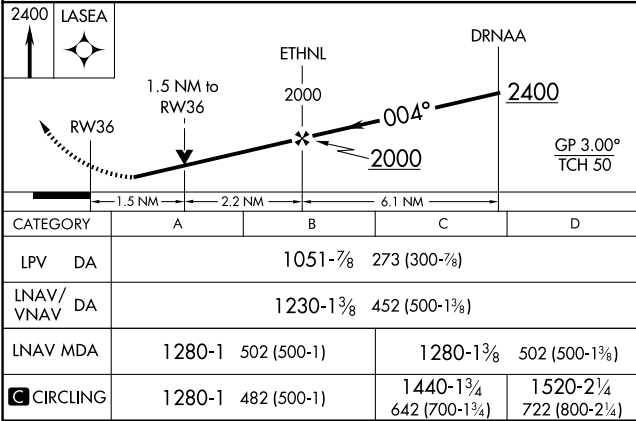
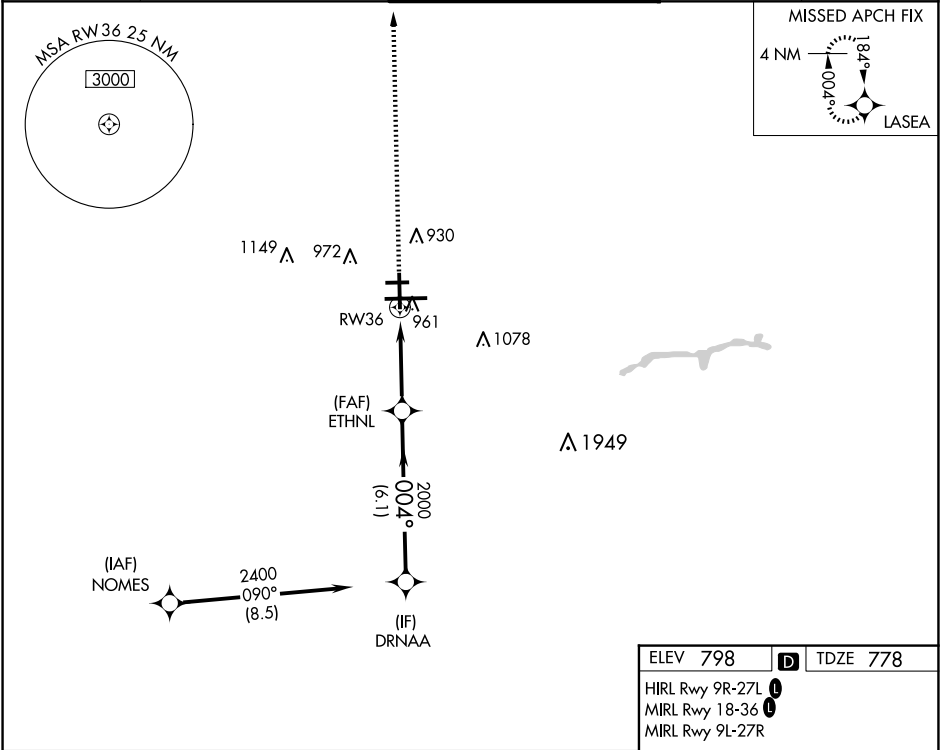
WAAS CH 69514 W36A	APP CRS 004°	Rwy Ldg TDZE 778 Apt Elev 798
--	------------------------	---

RNAV (GPS) RWY 36

SOUTH BEND INTL (SBN)

RNP APCH - GPS.	MISSED APPROACH: Climb to 2400 direct LASEA and hold.
⚠ Circling Rwy 27R NA at night. Rwy 36 helicopter visibility reduction below ¾ SM NA. ⚠ For uncompensated Baro-VNAV systems, LNAV/VNAV NA below -22°C or above 54°C.	

ATIS 120.675	SOUTH BEND APP CON★ 118.55 257.8	SOUTH BEND TOWER★ 135.675 (CTAF) 0 257.8	GND CON 121.7	CLNC DEL 121.9
------------------------	--	--	-------------------------	--------------------------



EC-2, 10 JUL 2025 to 07 AUG 2025

EC-2, 10 JUL 2025 to 07 AUG 2025