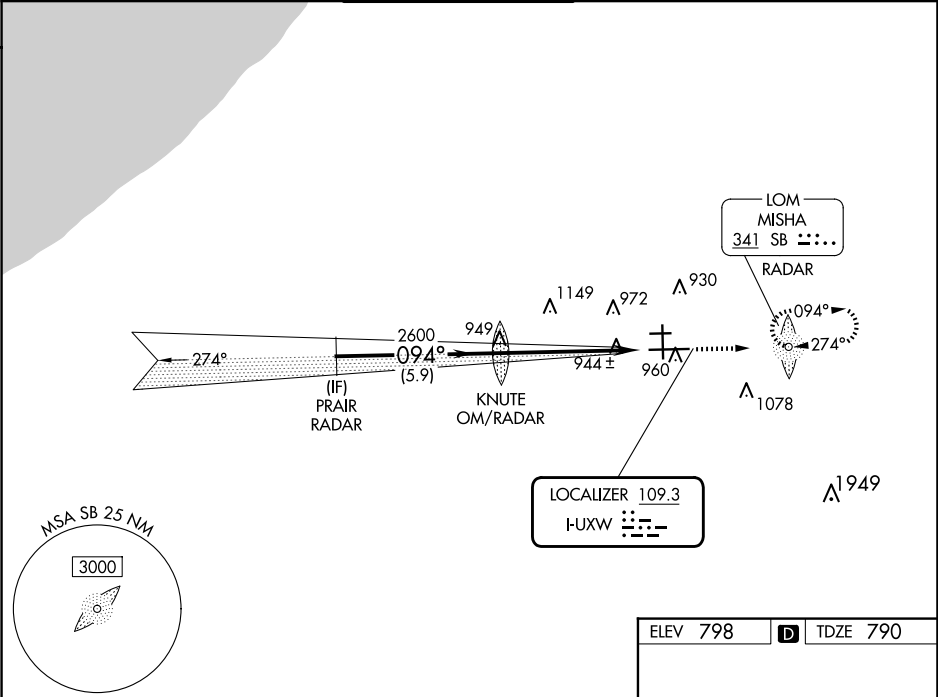


LOC I-UXW <b>109.3</b>	APP CRS <b>094°</b>	Rwy Ldg TDZE Apt Elev	<b>8412</b> <b>790</b> <b>798</b>
---------------------------	------------------------	-----------------------------	---

ILS or LOC RWY 9R

SOUTH BEND INTL (SBN)

ADF and RADAR required.		MALSF	MISSED APPROACH: Climb to 3000 direct MISHA LOM/RADAR and hold, continue climb-in-hold to 3000.	
▼ Rwy 9R helicopter visibility reduction below RVR 4000 NA. For inop ALS, increase S-ILS 9R visibility all Cats to RVR 5500, increase S-LOC 9R Cats C/D visibility to RVR 6000. Circling Rwy 27R NA at night.				
ATIS <b>120.675</b>	SOUTH BEND APP CON★ <b>118.55 257.8</b>	SOUTH BEND TOWER★ <b>135.675 (CTAF) 0 257.8</b>	GND CON <b>121.7</b>	CLNC DEL <b>121.9</b>



PRAIR RADAR		KNUTE OM/RADAR	3000	SB
2600		2600		
GS 3.00°		2600		
TCH 55				
5.9 NM		5.3 NM		
CATEGORY	A	B	C	D
S-ILS 9R	1135/40 345 (400-¾)			
S-LOC 9R	1200/40	410 (500-¾)	1200/50	410 (500-1)
CIRCLING	1280-1	482 (500-1)	1440-1¾ 642 (700-1¾)	1520-2¼ 722 (800-2¼)

ELEV 798	TDZE 790
HIRL Rwy 9R-27L MIRL Rwy 18-36 MIRL Rwy 9L-27R	
FAF to MAP 5.3 NM	
Knots	60 90 120 150 180
Min:Sec	5:18 3:32 2:39 2:07 1:46