

VORTAC FSD <b><u>115.0</u></b> Chan <b>97</b>	APP CRS <b>147°</b>	Rwy Idg <b>8000</b> TDZE <b>1429</b> Apt Elev <b>1430</b>
---	------------------------	---

VOR or TACAN RWY 15  
JOE FOSS FLD (FSD)

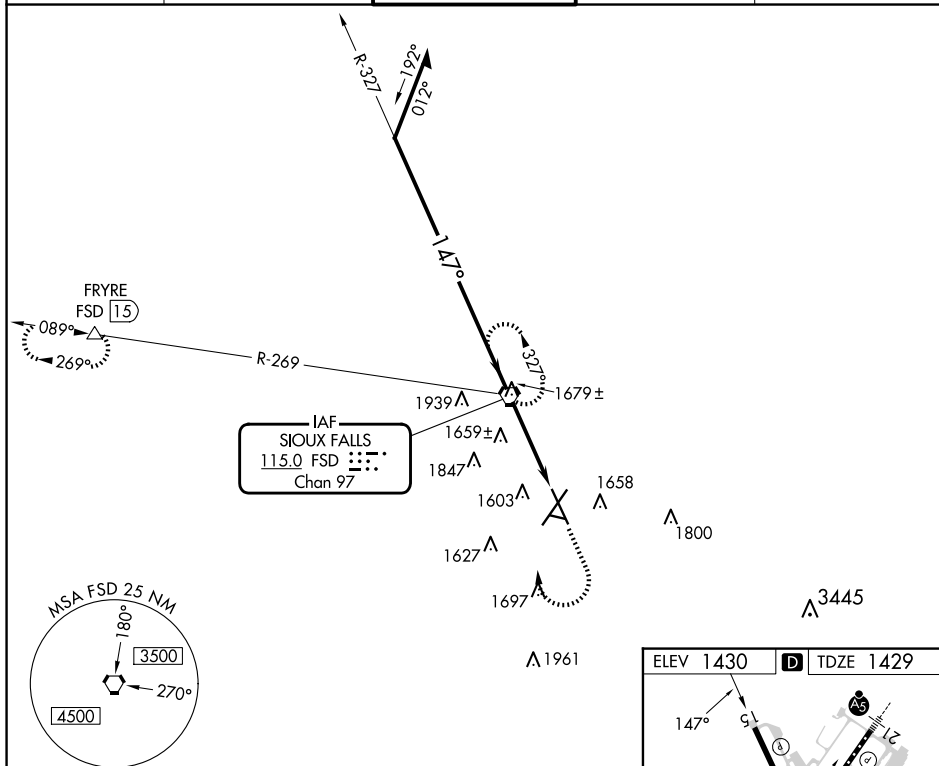
JOE FOSS FLD (ESD)

  
  
 ASR  
 -31°C

Rwy 15 helicopter visibility reduction  
below  $\frac{3}{4}$  SM NA.

**MISSED APPROACH:** Climb to 3500 then right turn direct FSD VORTAC and hold. (TACAN aircraft continue climb to 5000 via FSD R-269 to FRYRE 15 DME and hold west, right turns, 089° inbound)

ATIS 126.6	SIoux FALLS APP CON★ 125.8 284.725	SIoux FALLS TOWER★ 118.3(CTAF) 0 257.8	GND CON 121.9 348.6	UNICOM 122.95
---------------	---------------------------------------	---	------------------------	------------------



VGSI and descent angles not coincident  
(VGSI Angle 3.00/TCH 48).

FSD  
PORTAC

3500



FSD

Remain  
within 15 NM

3500

2800

---

FSD

525

---

A horizontal beam is shown with a vertical line at its left end. A horizontal arrow labeled 'M' points to the right, meeting the vertical line at its midpoint.

CATEGORY	A	B	C	D	E						
S-15	1920-1	491 (500-1)	1920-1 $\frac{3}{8}$ 491 (500-1 $\frac{3}{8}$ )			MIRL Rwy 9-27 <b>1</b> HIRL Rwy 3-21 and 15-33 <b>1</b> FAF to MAP 3.7 NM					
<b>C</b> CIRCLING	1960-1 530 (600-1)	1980-1 550 (600-1)	2060-1 $\frac{3}{4}$ 630 (700-1 $\frac{3}{4}$ )	2200-2 $\frac{1}{2}$ 770 (800-2 $\frac{1}{2}$ )	2300-3 870 (900-3)	Knots	60	90	120	150	180
						Min:Sec	3:42	2:28	1:51	1:29	1:14

SIoux FALLS, SOUTH DAKOTA

Amdt 21F 18JUN20

43°35'N-96°45'W

JOE FOSS FLD (FSD)

VOR or TACAN RWY 15

NC-1, 10 JUL 2025 to 07 AUG 2025