

APP CRS  
098°

Rwy Idg  
TDZE  
Apt Elev

3151  
1424  
1430

RNAV (GPS) RWY 9

JOE FOSS FLD (FSD)

RNP APCH - GPS.

▼

▲

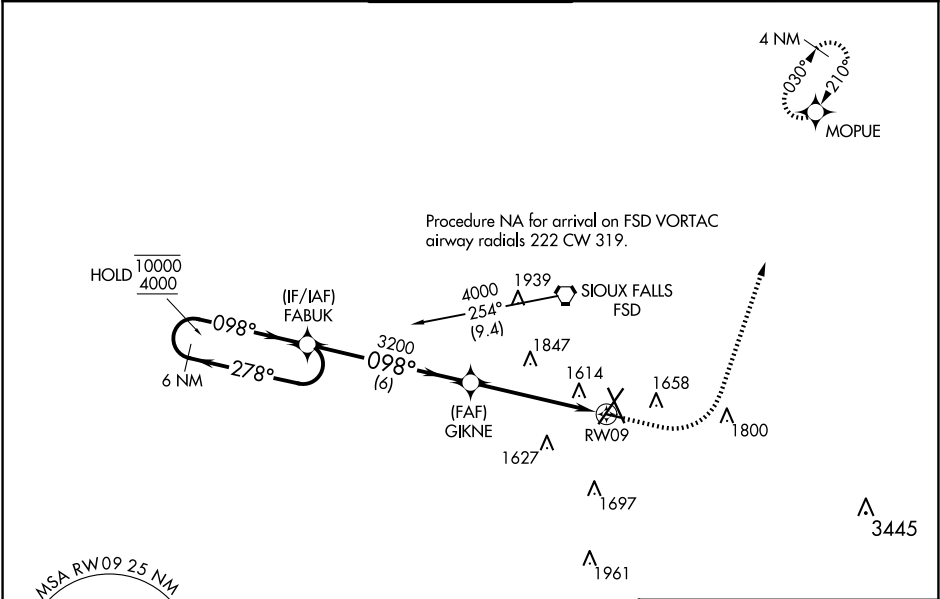
ASR

❄ -31°C

Rwy 9 helicopter visibility reduction below ¾ SM NA.

MISSED APPROACH: Climb to 2500 then climbing left turn to 4000 direct MOPUE and hold.

ATIS 126.6	SIoux FALLS APP CON* 125.8 284.725	SIoux FALLS TOWER* 118.3 (CTAF) 257.8	GND CON 121.9 348.6	UNICOM 122.95
---------------	---------------------------------------	--	------------------------	------------------



ELEV 1430

TDZE 1424

6 NM Holding Pattern	FABUK	GIKNE	2500	4000	MOPUE
10000 4000	← 278° 098° →	098°	3.27° TCH 40	1.5 NM to RW09	
		3200		RW09	
		6 NM	3.5 NM	1.5 NM	

CATEGORY	A	B	C	D
LNAV MDA	2000-1	576 (600-1)	NA	
CIRCLING	2000-1	570 (600-1)	NA	

TDZ/CL Rwy 21

MIRL Rwy 9-27

REIL Rws 15 and 33

HIRL Rws 3-21 and 15-33