


APP CRS 272°	Rwy Idg 3151 TDZE 1424 Apt Elev 1430
------------------------	---

RNAV (GPS) RWY 27
JOE FOSS FLD (FSD)

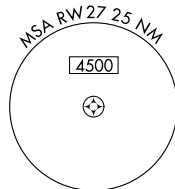
JOE FOSS FLD (FSD)

RNP APCH.

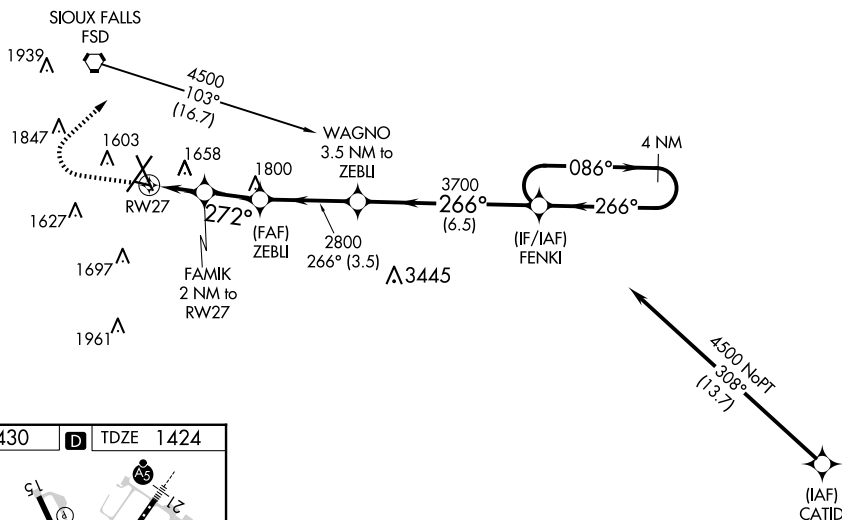
ASR Rwy 27 helicopter visibility reduction below $\frac{3}{4}$ SM NA.
 -31°C

MISSED APPROACH: Climb to 2500, then climbing right turn to 4000 direct MOPUE WP and hold.

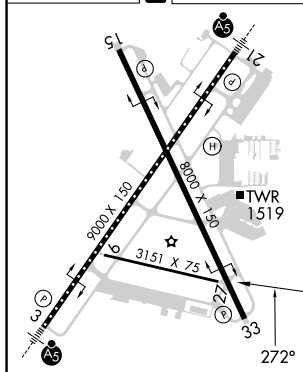
ATIS 126.6	SIoux FALLS APP CON* 125.8 284.725	SIoux FALLS TOWER* 118.3(CTAF) 0 257.8	GND CON 121.9 348.6	UNICOM 122.95
---------------	---------------------------------------	---	------------------------	------------------



Procedure NA for arrivals on FSD VORTAC
airway radials 046 CW 110.



ELEV 1430	D	TDZE 1424
-----------	----------	-----------



TDZ/CL Rwy 21
MIRL Rwy 9-27 **L**
REIL Rwys 15 and 33 **L**
HIRL Rwys 3-21 and 15-33 **L**

