

SIoux FALLS, SOUTH DAKOTA

AL-396 (FAA)

25051

WAAS CH 99323 W21A	APP CRS 210°	Rwy Idg TDZE Apt Elev	8999 1430 1430
--	------------------------	-----------------------------	---

RNAV (GPS) RWY 21
JOE FOSS FLD (FSD)

JOE FOSS FLD (FSD)

▲ For uncompensated Baro-VNAV systems, LNAV/VNAV NA below -22°C (-7°F) or above 54°C (130°F). DME/DME RNP-0.3 NA. For inop ALS, increase LPV all Cats visibility to RVR 4000 and LNAV/VNAV all Cats visibility to RVR 4500.

MALSR
A5

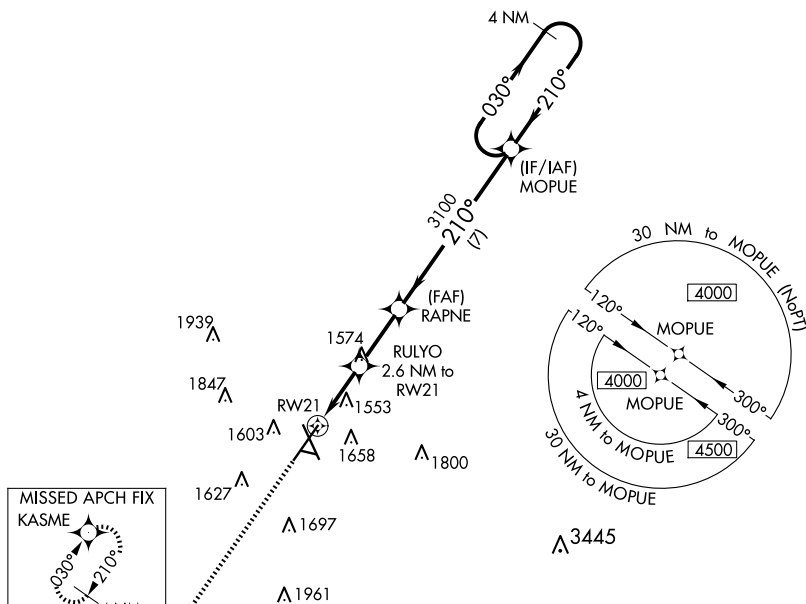
MISSED APPROACH:
Climb to 4000 direct
KASME and hold.

ATIS
126.6

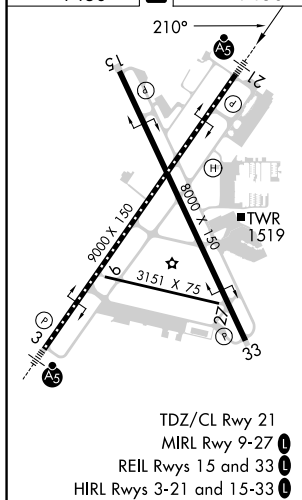
SIOUX FALLS APP CON★
 125.8 284.725

SIOUX FALLS TOWER★
 118.3 (CTAF) **0** 257.8

GND CON
121.9 348.6

UNICOM
122.95

ELEV 1430	D	TDZE 1430
-----------	----------	-----------



TDZ/CL Rwy 21
MIRL Rwy 9-27
Rwys 15 and 33
3-21 and 15-33

Holding Pattern Details:

- Altitude:** 4000
- Frequency:** KASME
- Pattern Type:** 4 NM Holding Pattern
- Turns:** 210°
- GP 300' TCH 49**
- Distances:** 1.1 NM, 1.5 NM, 2.5 NM, 7 NM
- Altitudes:** 3100, *2300
- Angles:** 030°, 210°
- Labels:** MOPUE, RAPNE, RULYO, RW21, *LNAV only.

CATEGORY	A	B	C	D
LPV DA	1630/18		200 (300-½)	
LNAV/VNAV DA	1704/24		274 (300-½)	
LNAV MDA	1820/24 390 (400-½)		1820/35 390 (400-⅝)	
C CIRCLING	1960-1 530 (600-1)	1980-1 550 (600-1)	2060-1¾ 630 (700-1¾)	2200-2½ 770 (800-2½)

SIoux FALLS, SOUTH DAKOTA

Amdt 2 07DEC17

43°35'N-96°45'W

JOE FOSS FLD (FSD)

RNAV (GPS) RWY 21

NC-1, 10 JUL 2025 to 07 AUG 2025