

LOC I-JOU <b><u>111.1</u></b>	APP CRS <b>210°</b>	Rwy Idg <b>8999</b> TDZE <b>1430</b> Apt Elev <b>1430</b>
----------------------------------	------------------------	---

ILS or LOC RWY 21  
JOE FOSS FLD (FSD)

  
  
 ASR  
 -31°C

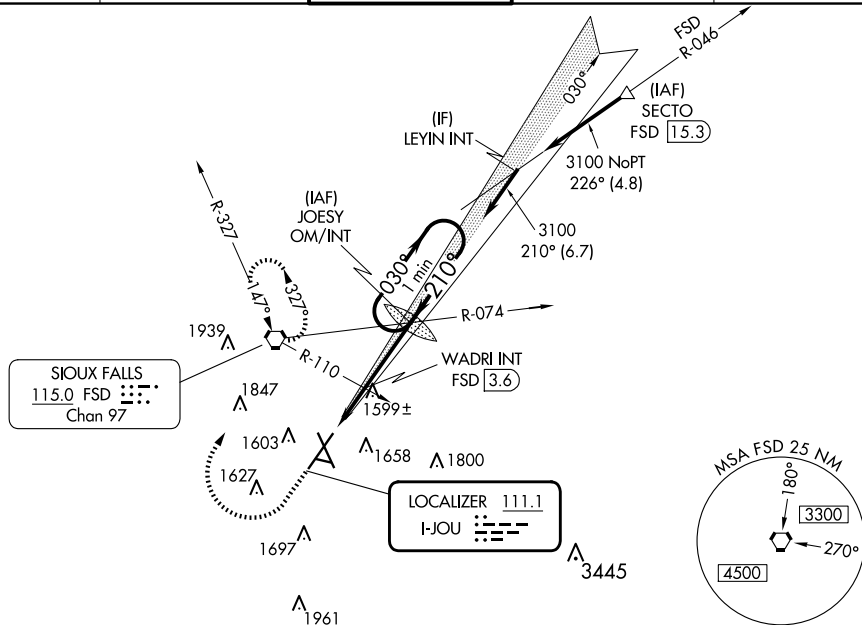
For inoperative MALSR increase S-ILS all Cats visibility to  $\frac{3}{4}$  mile, increase S-LOC 21 Cat C/D visibility to  $1\frac{1}{8}$  mile. When using WADRI FIX minimums, increase S-LOC 21 Cat C/D visibility to 1 mile.

MALSR

**MISSED APPROACH:** Climb to 3400 then right turn direct FSD VORTAC and hold.

ATIS 126.6	SIoux FALLS APP CON ★ 125.8 284.725	SIoux FALLS TOWER ★ 118.3 (CTAF) 0 257.8	GND CON 121.9 348.6	UNICOM 122.95
---------------	--	---	------------------------	------------------



NC-1, 10 JUL 2025 to 07 AUG 2025

**Plan View:** Shows the runway (RWY 21) and taxiway (TWX 1519) layout. The runway is 8000 X 150 feet. The taxiway is 3151 X 75 feet. The runway is oriented 210°. The taxiway is oriented 030°. The runway is labeled TDZ/CL Rwy 21. The taxiway is labeled REIL Rwy 15 and 33. The taxiway is labeled MJRL Rwy 9-27. The taxiway is labeled HIRL Rwy 3-21 and 15-33. The taxiway is labeled FAF to MAP 4.9 NM.

**Profile View:** Shows the ILS profile. The runway is 8000 X 150 feet. The taxiway is 3151 X 75 feet. The runway is oriented 210°. The taxiway is oriented 030°. The runway is labeled TDZ/CL Rwy 21. The taxiway is labeled REIL Rwy 15 and 33. The taxiway is labeled MJRL Rwy 9-27. The taxiway is labeled HIRL Rwy 3-21 and 15-33. The taxiway is labeled FAF to MAP 4.9 NM.

**ILS and Circling Minimums Table:**

CATEGORY	A	B	C	D
S-ILS 21	1630/18 200 (200-½)			
S-LOC 21	2100/24 670 (700-½)	2100-1½ 670 (700-1½)		
<b>C</b> CIRCLING	2100-1 670 (700-1)	2100-1¾ 670 (700-1¾)		2200-2½ 770 (800-2½)
WADRI FIX MINIMUMS				
S-LOC 21	1800/24 370 (400-½)	1800/35 370 (400-¾)		
<b>C</b> CIRCLING	1960-1 530 (600-1)	1980-1 550 (600-1)	2060-1¾ 630 (700-1¾)	2200-2½ 770 (800-2½)

SIOUX FALLS, SOUTH DAKOTA

Amdt 10C 18JUN20

43°35'N-96°45'W

JOE FOSS FLD (FSD)

ILS or LOC RWY 21