
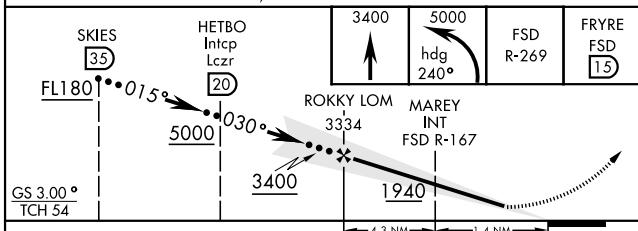
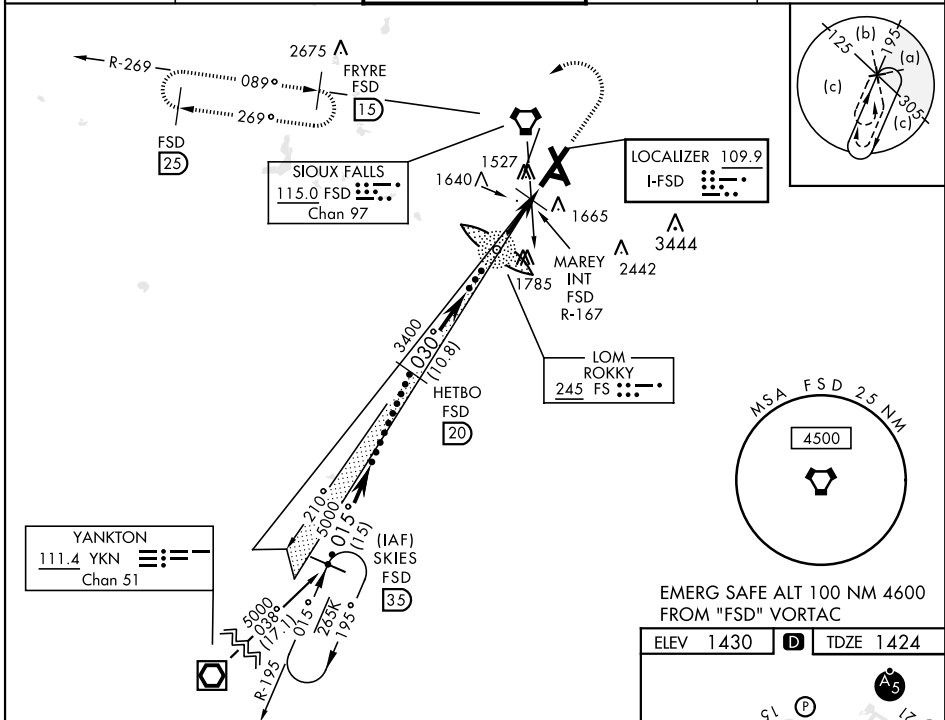


SI~~O~~UX FALLS, SOUTH DAKOTA

HI-ILS or LOC RWY 3

LOC I-FSD 109.9	APCH CRS 030°	Rwy Idg TDZE Arprt Elev 8999 1424 1430	AL-396 [USAF]	HI-ILS or LOC RWY 3
DME required.			MALSR 	JOE FOSS FLD (KFSD)
<p>▼ ** When ALS inop, increase CAT CDE RVR to 40, vis to ¾ mile.</p> <p>** When ALS inop, increase CAT CDE vis to 1 ¾ mile.</p> <p>*** When ALS inop, increase CAT CDE RVR to 55, vis to 1 mile.</p>			<p>MISSED APPROACH: Climb to 3400, then climbing left turn to 5000 on heading 240° and FSD VORTAC R-269 to FRYRE (FSD 15 DME) and hold.</p>	

ATIS 126.6	SIoux FALLS APP CON 125.8 306.2	SIoux FALLS TOWER ★ 118.3(CTAF) 0 257.8	GND CON 121.9 348.6	ASR
---------------	------------------------------------	--	------------------------	-----



CATEGORY	C	D	E
S-LS 3 *	1674/24	250	(300-½)
S-LOC 3 **	1940/55 516 (600-1)	1940/60 516 (600-1½)	
C CIRCLING	2060-1¾ 630 (700-1¾)	2200-2½ 770 (800-2½)	2300-3 870 (900-3)
MAREY FIX MINIMA			
S-LOC 3 ***	1780/30 356 (400-¾)	1780/40 356 (400-¾)	
C CIRCLING	2060-1¾ 630 (700-1¾)	2200-2½ 770 (800-2½)	2300-3 870 (900-3)

SIOUX FALLS, SOUTH DAKOTA

43°35'N-96°45'W

JOE FOSS FLD (KFSD)

Amdt 9B 04NOV21

HI-ILS or LOC RWY 3

NC-1, 10 JUL 2025 to 07 AUG 2025