

WAAS CH 61238 W36A	APP CRS 358°	Rwy Idg TDZE 1097 Apt Elev 1098
--	------------------------	---

RNAV (GPS) RWY 36

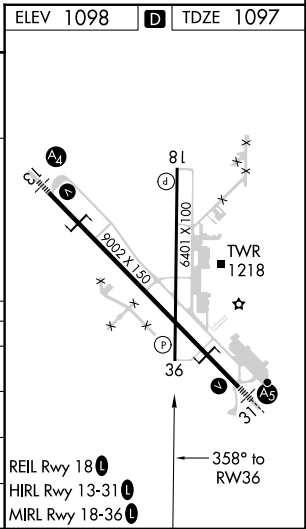
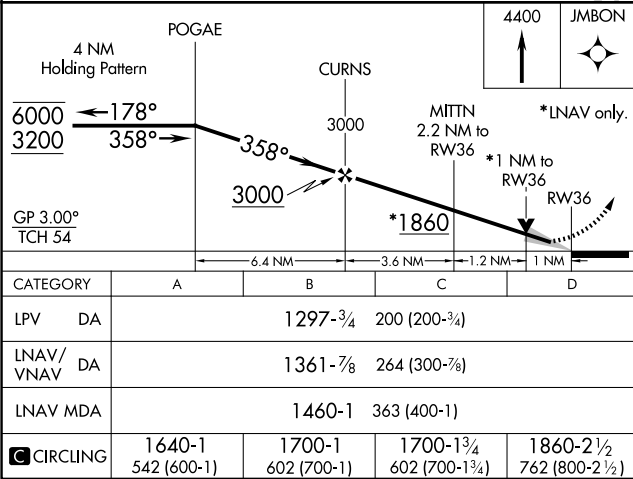
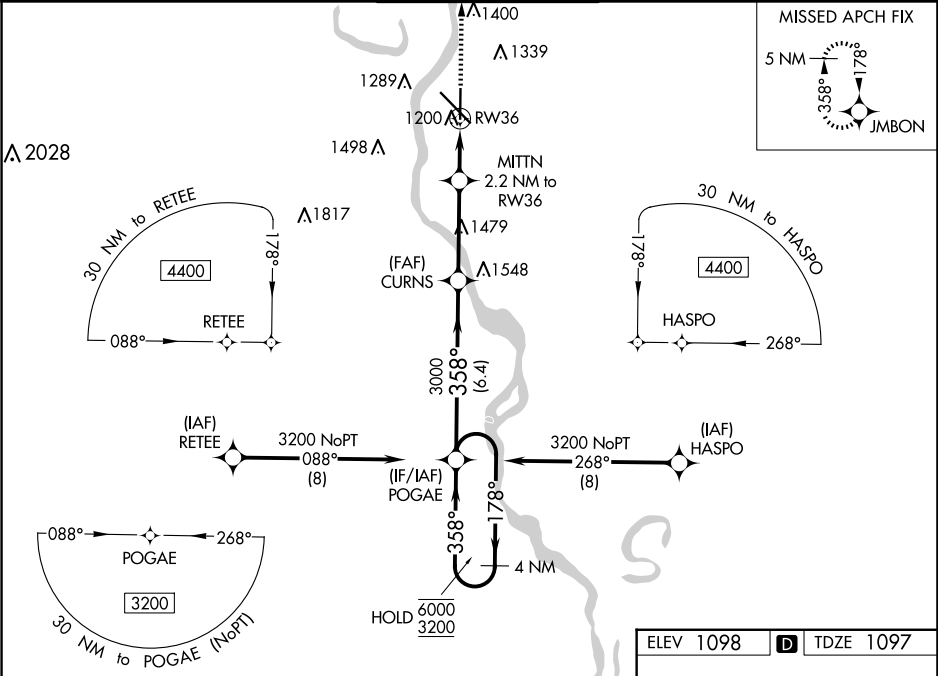
SIoux GATEWAY/BRIG GENERAL BUD DAY FLD (SU_X)

RNP APCH.

For uncompensated Baro-VNAV systems, LNAV/VNAV NA below -20°C or above 54°C.

MISSED APPROACH: Climb to 4400 direct JMBON and hold, continue climb-in-hold to 4400.

ATIS 119.45 270.8	SIoux CITY APP CON ★ 124.6 307.0	SIoux CITY TOWER ★ 118.7 (CTAF) 0 254.3	GND CON 121.9 348.6	UNICOM 122.95
-----------------------------	--	---	-------------------------------	-------------------------



NC-3, 10 JUL 2025 to 07 AUG 2025

NC-3, 10 JUL 2025 to 07 AUG 2025