

SIOUX CITY, IOWA

AL-395 (FAA)

25107

WAAS CH 90211 W31A	APP CRS 313°	Rwy Idg 9002 TDZE 1096 Apt Elev 1098
--	------------------------	---

RNAV (GPS) RWY 31

SIoux GATeway/BRIG General Bud Day Fld (SUX)

	RNP APCH-GPS.
--	---------------

T For uncompensated Baro-VNAV systems, LNAV/VNAV NA below
A -21°C or above 54°C. For inop ALS increase LPV Cat E visibility
 to RVR 4000; increase LNAV/VNAV all Cats visibility to 1% SM and
 LNAV Cats C/D/E visibility to 1% SM.
 ** RVR 1800 authorized with use of FD or AP or HUD to DA.

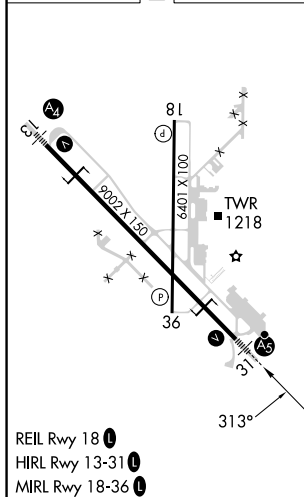
MALSR



MISSED APPROACH: Climb to 3500
direct VOGYU and hold.

ATIS 119.45 270.8	SIoux CITY APP CON ★ 124.6 307.0	SIoux CITY TOWER ★ 118.7(CTAF) 0 254.3	GND CON 121.9 348.6	UNICOM 122.95
----------------------	-------------------------------------	---	------------------------	------------------

ELEV 1098	D	TDZE 1096
-----------	----------	-----------



<div>3500 ↑</div>		<div>VOGYU ✧</div>		VGS1 and RNAV glidepath not coincident (VGS1 Angle 3.00/TCH 51).				
*RNAV only.		*1.3 NM to RW31		TOVUY 2900		WAVUK 4 NM Holding Pattern		
<div>RW31 ↻</div>		1.3 NM		4.2 NM		6.6 NM		
		133° → 6000 ← 313° 3900		313° 2900		GP 3.00° TCH 43°		
CATEGORY		A		B		C		
LPV DA**		1296/24		200 (200-½)		D		
RNAV/ VNAV		DA		1596/50		500 (500-1)		
RNAV MDA		1560/24		464 (500-½)		1560/50 464 (500-1)		
1640-1 542 (600-1)		1700-1 602 (700-1)		1700-1¾ 602 (700-1¾)		1860-2½ 762 (800-2½)		
2000-3 902 (1000-3)		2000-3 902 (1000-3)		2000-3 902 (1000-3)		2000-3 902 (1000-3)		
CIRCLING		1640-1 542 (600-1)		1700-1 602 (700-1)		1700-1¾ 602 (700-1¾)		
		1860-2½ 762 (800-2½)		2000-3 902 (1000-3)		2000-3 902 (1000-3)		

SIOUX CITY, IOWA

Orig-1 11AUG22

SIoux GATeway/BRIG GENERAL BUD DAY FLD (STIX)

42°24'N-96°23'W

RNAV (GPS) RWY 31

NC-3, 10 JUL 2025 to 07 AUG 2025

NC-3, 10 JUL 2025 to 07 AUG 2025