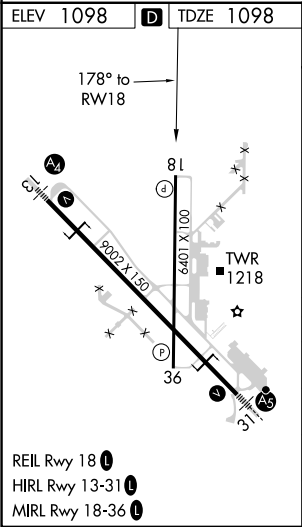
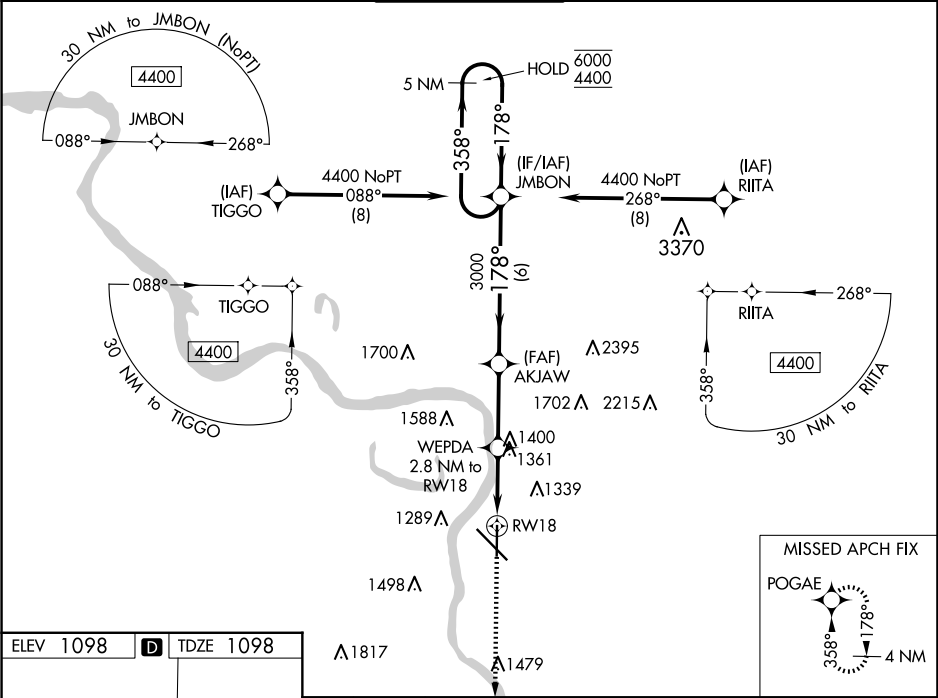


WAAS CH 77838 W18A	APP CRS 178°	Rwy Idg TDZE 1098 Apt Elev 1098
--	------------------------	---

RNAV (GPS) RWY 18

SIoux GATEWAY/BRIG GENERAL BUD DAY FLD (SUx)

RNP APCH. ▼ For uncompensated Baro-VNAV systems, LNAV/VNAV ▲ NA below -20°C or above 54°C.		MISSED APPROACH: Climb to 3200 direct POGAE and hold.		
ATIS 119.45 270.8	SIoux CITY APP CON * 124.6 307.0	SIoux CITY TOWER * 118.7 (CTAF) 0 254.3	GND CON 121.9 348.6	UNICOM 122.95



ELEV 1098 D TDZE 1098		3200 POGAE	
178° to RW18		*LNAV only	
81		*1.6 NM to RW18	
8002 X 130		WEPDA 2.8 NM to RW18	
6400		AKJAW	
6400		JMBON	
36		5 NM Holding Pattern	
311		3200	
311		3000	
311		GP 3.00°	
311		TCH 54	
311		CATEGORY	
311		A	
311		B	
311		C	
311		D	
311		LPV DA	
311		1352-3/4 254 (300-3/4)	
311		LNAV/VNAV DA	
311		1430-1 332 (400-1)	
311		LNAV MDA	
311		1680-1 582 (600-1)	
311		1680-1 3/4 582 (600-1 3/4)	
311		CIRCLING	
311		1680-1 582 (600-1)	
311		1700-1 602 (700-1)	
311		1700-1 3/4 602 (700-1 3/4)	
311		1860-2 1/2 762 (800-2 1/2)	