

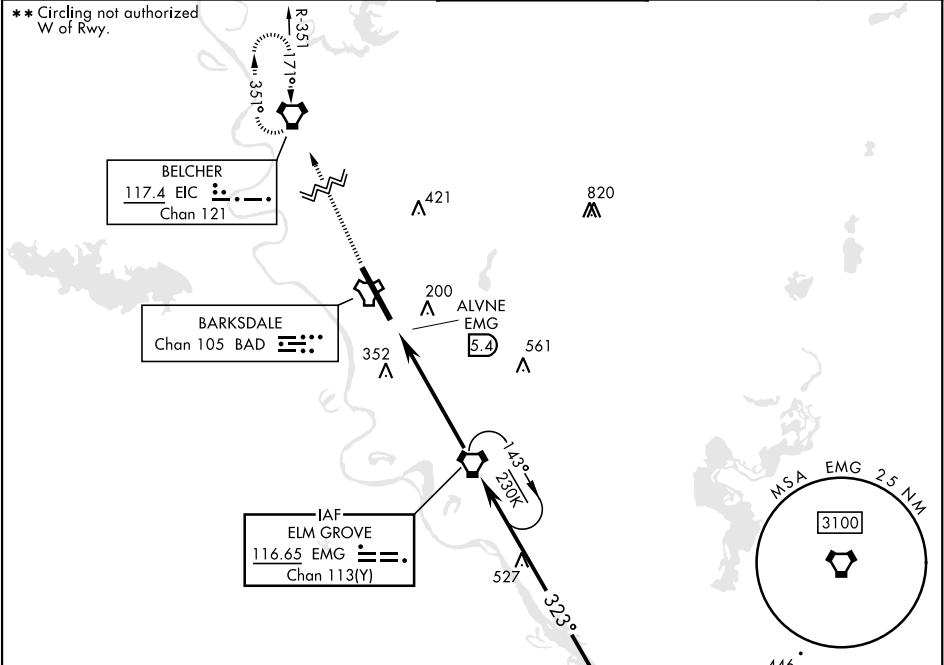
VOR/DME Y RWY 33

VORTAC EMG 116.65 Chan 113(Y)	APCH CRS 323°	Rwy Idg 11,758 THRE 161 Arpt Elev 165
---	-------------------------	--

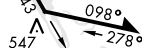
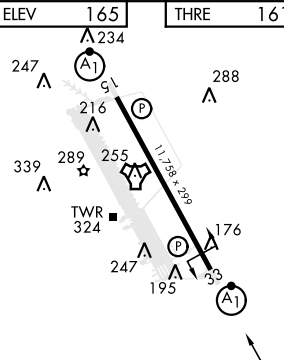

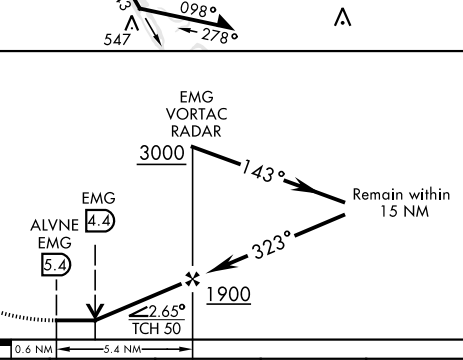
[USAF]

BARKSDALE AFB (KBAD)

DME or RADAR required.		ALSIF-1 	MISSED APPROACH: Climb to 3100 direct EIC VORTAC and hold.	
ATIS 307.025	SHREVEPORT APP CON 123.75 360.725 (320°-152°) 119.9 335.55 (153°-319°)	TOWER ★ 128.25 278.3	GND CON 121.8 253.5	ASR



EMERG SAFE ALT 100 NM 3300

ELEV 165		THRE 161			
					
HIRL Rwy 15-33		CATEGORY		A B C D E	
FAF to MAP 5.4 NM		S-VOR 33 *		640/24 479 (500-½) 640/50 479 (500-1)	
Knots		NOT AUTHORIZED		760-2 780-2¼	
Min:Sec		595 (600-2) 615 (700-2¼)			

VOR/DME Y RWY 33

SC-4, 10 JUL 2025 to 07 AUG 2025

SC-4, 10 JUL 2025 to 07 AUG 2025