
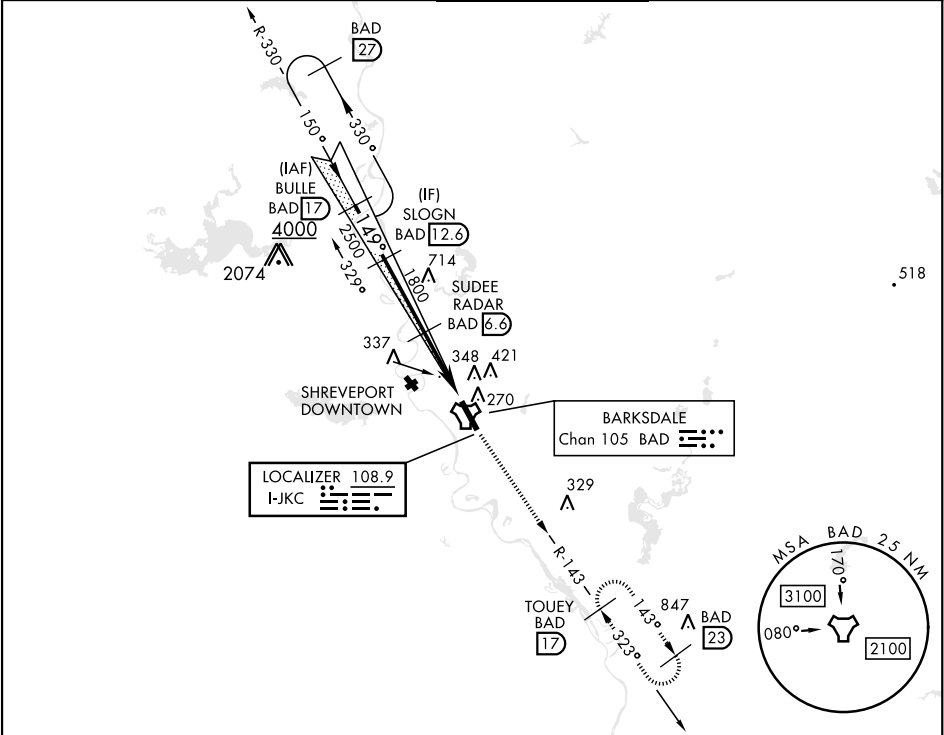


ILS or LOC Z RWY 15

LOC I-JKC <b>108.9</b>	APCH CRS <b>149°</b>	Rwy ldg <b>11,758</b> THRE <b>163</b> Arpt Elev <b>165</b>	[USAF]	BARKSDALE AFB (KBAD)		
RADAR or DME required			ALSIF-1 	MISSED APPROACH: Climb to 3000 via BAD R-143 direct TOUEY and hold.		
* When ALS inop, increase RVR to 40 and vis to ¾ mile. ** When ALS inop, increase CAT AB RVR to 55 and vis to 1 mile, CAT CDE vis to 1¾ miles. *** Circling not authorized W of Rwy.						
ATIS <b>307.025</b>	SHREVEPORT APP CON 320°-152° <b>123.75 360.725</b> 153°-319° <b>119.9 335.55</b>		TOWER ★ <b>128.25 278.3</b>		GND CON <b>121.8 253.5</b>	ASR



EMERG SAFE ALT 100 NM 3300

CATEGORY	A	B	C	D	E
S-ILS 15 *	363/24		200	(200-½)	
S-LOC 15 **	640/24 477 (500-½)		640/50 477 (500-1)		
***			760-2 595 (600-2)	780-2¼ 615 (700-2¼)	
CIRCLING	NOT AUTHORIZED				

HIRL Rwy 15-33					
FAF to MAP 5.2 NM					
Knots	60	90	120	150	180
Min:Sec	5:12	3:28	2:36	2:05	1:44

ILS or LOC Z RWY 15

SC-4, 10 JUL 2025 to 07 AUG 2025

SC-4, 10 JUL 2025 to 07 AUG 2025