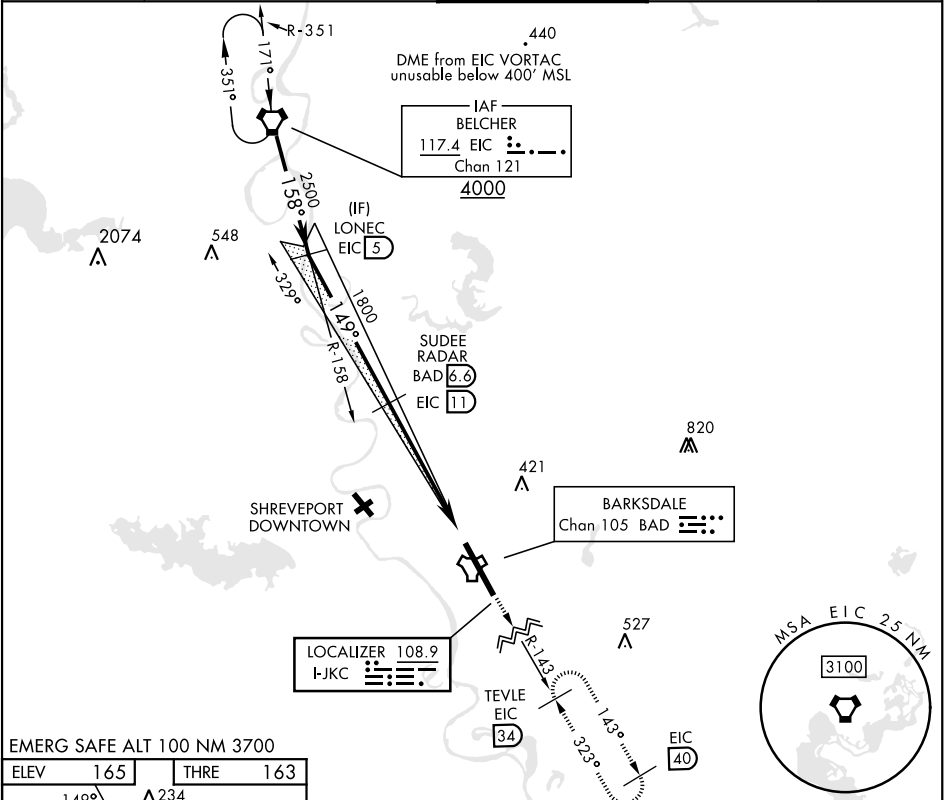


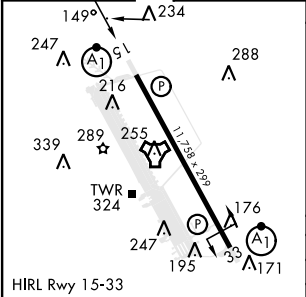
ILS or LOC Y RWY 15

LOC I-JKC <b>108.9</b>	APCH CRS <b>149°</b>	Rwy Idg <b>11,758</b> THRE <b>163</b> Arpt Elev <b>165</b>	[USAF]	BARKSDALE AFB (KBAD)
RADAR or DME required.			ALSF-1 	MISSED APPROACH: Climb to 2000, then climbing left turn to join EIC VORTAC R-143 outbound direct TEVLE (EIC 34 DME) and hold, maintain 3000.
* When ALS inop, increase RVR to 40 and vis to 3/4 mile. ** When ALS inop, increase CAT AB RVR to 55 and vis to 1 mile, CAT CDE vis to 1 3/8 miles. *** Circling not authorized W of Rwy.				

ATIS <b>307.025</b>	SHREVEPORT APP CON 320°-152° <b>123.75 360.725</b> 153°-319° <b>119.9 335.55</b>	TOWER ★ <b>128.25 278.3</b>	GND CON <b>121.8 253.5</b>	ASR
------------------------	--	--------------------------------	-------------------------------	-----



EMERG SAFE ALT 100 NM 3700	
ELEV <b>165</b>	THRE <b>163</b>



EIC VORTAC 4000		Intcp. Iczr LONEC EIC 5	SUDEE RADAR BAD 6.6 EIC 11	2000 EIC R-143	3000 TEVLE EIC 34
2500		1800	FIRKU EIC 16.2		
GS 2.50° TCH 53		5.2 NM		0.6 NM	
CATEGORY	A	B	C	D	E
S-ILS 15*	363/24		200	(200-1/2)	
S-LOC 15**	640/24	477 (500-1/2)	640/50	477	(500-1)
*** CIRCLING		NOT AUTHORIZED		760-2 595 (600-2)	780-2 1/4 615 (700-2 1/4)

ILS or LOC Y RWY 15

SC-4, 10 JUL 2025 to 07 AUG 2025

SC-4, 10 JUL 2025 to 07 AUG 2025