

BOSSIER CITY, LOUISIANA

HI-ILS or LOC Y RWY 33

LOC I-BAD 109.9	APCH CRS 329°	Rwy Idg 11,758 THRE 161 Arpt Elev 165	[USAF]	BARKSDALE AFB (KBAD)
---------------------------	-------------------------	--	--------	----------------------

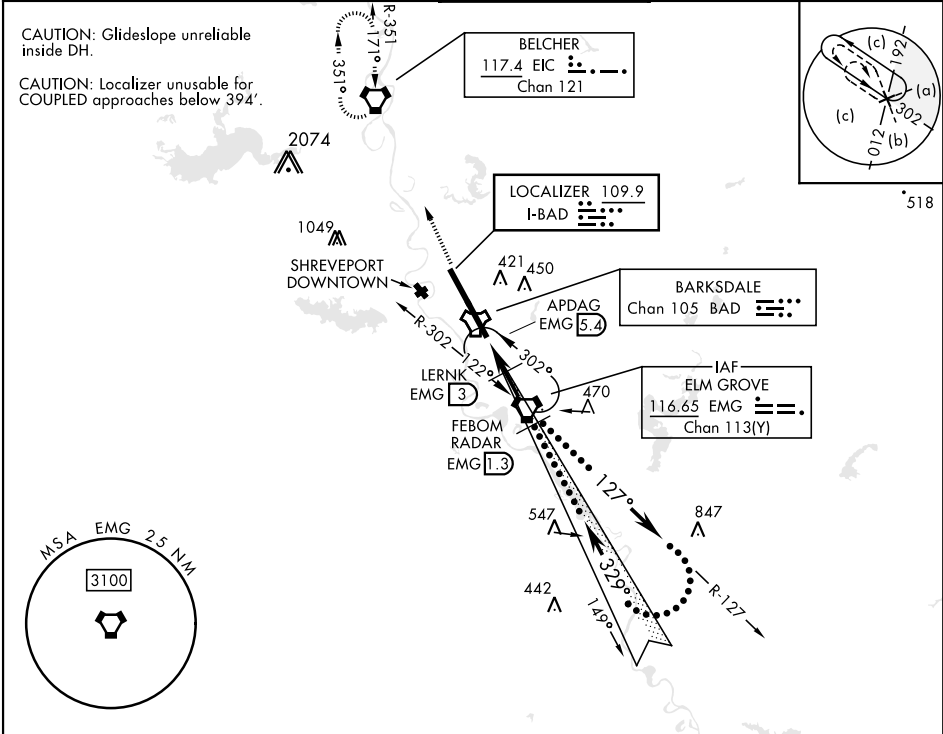
DME or RADAR required

* When ALS inop, increase CAT CDE RVR to 40 and vis to ¾ mile.
** When ALS inop, increase CAT CDE RVR to 60 and vis to 1⅓ miles.
*** Circling not authorized W of Rwy.

ALSF-1
A1

MISSED APPROACH: Climb to 3100 direct to EIC VORTAC and hold.

ATIS 307.025	SHREVEPORT APP CON 320°-152° 123.75 360.725 153°-319° 119.9 335.55	TOWER ★ 128.25 278.3	GND CON 121.8 253.5	ASR
------------------------	--	--------------------------------	-------------------------------	-----



EMERG SAFE ALT 100 NM 3300

3100
↑
EIC

EMG VORTAC
12,000
127°
329°
Right at 8000
Remain within 23 NM
GS 2.50°
TCH 49

APDAG EMG 5.4
LERNK EMG 3
FEBOM RADAR EMG 1.3
1000
2200
0.6 NM
2.4 NM
4.3 NM

CATEGORY	C	D	E
S-ILS 33*	361/24	200 (200-½)	
S-LOC 33*	560/35	399 (400-¾)	
CIRCLING	NOT AUTHORIZED	760-2 595 (600-2)	780-2¼ 615 (700-2¼)

ELEV 165
THRE 161

247
288
339
289
255
TWR 324
176
195
171
161
329°
91°
117.38-299
A1
P
P
A1

HIRL Rwy 15-33	FAF to MAP 6.7 NM
Knots	120 140 160 180 200
Min:Sec	3:21 2:52 2:31 2:14 2:01

BOSSIER CITY, LOUISIANA

32°30'N-93°40'W

BARKSDALE AFB (KBAD)

Amtd 5 25JUN15

HI-ILS or LOC Y RWY 33