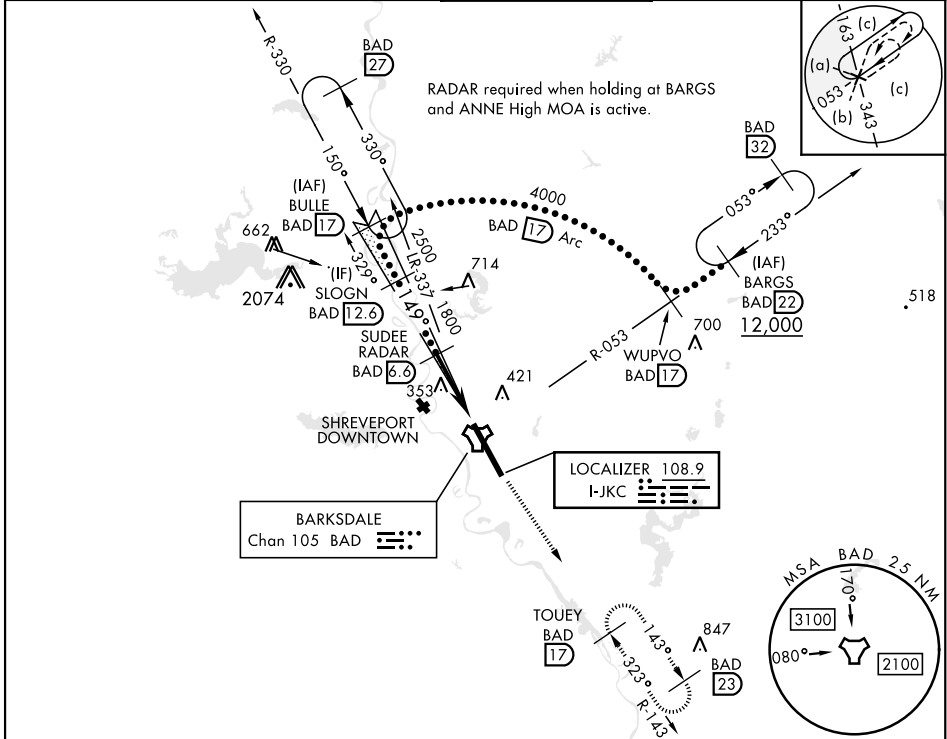


HI-ILS or LOC W RWY 15

LOC I-JKC 108.9	APCH CRS 149°	Rwy Idg 11,758 THRE 163 Arpt Elev 165	[USAF]	BARKSDALE AFB (KBAD)
RADAR or DME required			ALSF-1 	MISSED APPROACH: Climb to 3000 via BAD R-143 direct TOUEY and hold.
* When ALS inop, increase CAT CDE RVR to 40 and vis to 3/4 mile. ** When ALS inop, increase CAT CDE vis to 1 1/2 miles. *** Circling not authorized W of Rwy.				
ATIS 307.025	SHREVEPORT APP CON 320°-152° 123.75 360.725 153°-319° 119.9 335.55	TOWER★ 128.25 278.3	GND CON 121.8 253.5	ASR



EMERG SAFE ALT 100 NM 3300				<div>ELEV 165</div> <div>THRE 163</div>	
<div><div><div>BARGS BAD 22</div><div>WUPVO BAD 17</div><div>BULLE LOC Intcp BAD 17</div><div>SLOGN BAD 12.6</div><div>SUDEE RADAR BAD 6.6</div></div><div><div>3000</div><div>TOUEY BAD 17</div><div>BAD R-143</div><div>R-143</div></div></div> <div><div>12,000</div><div>233°</div><div>4000</div><div>2500</div><div>149°</div><div>1800</div><div>GS 2.50°</div><div>TCH 53</div><div>17</div><div>Arc</div><div>5.2 NM</div><div>0.6 NM</div></div>				<div><div>277</div><div>149°</div><div>247</div><div>216</div><div>206</div><div>288</div><div>289</div><div>255</div><div>11,758</div><div>1,299</div><div>TWR 324</div><div>247</div><div>339</div><div>33</div><div>A1</div></div>	
CATEGORY	C	D	E	HIRL Rwy 15-33	
S-ILS 15*	363/24	200	(200-½)	FAF to MAP 5.2 NM	
S-LOC 15**	640/50	477	(500-1)	Knots	120 140 160 180 200
*** CIRCLING	NOT AUTHORIZED	760-2 595 (600-2)	780-2¼ 615 (700-2¼)	Min:Sec	2:36 2:14 1:57 1:44 1:34

HI-ILS or LOC W RWY 15