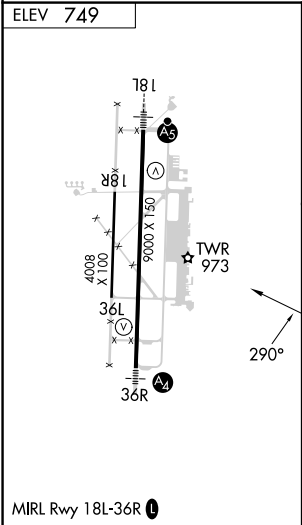
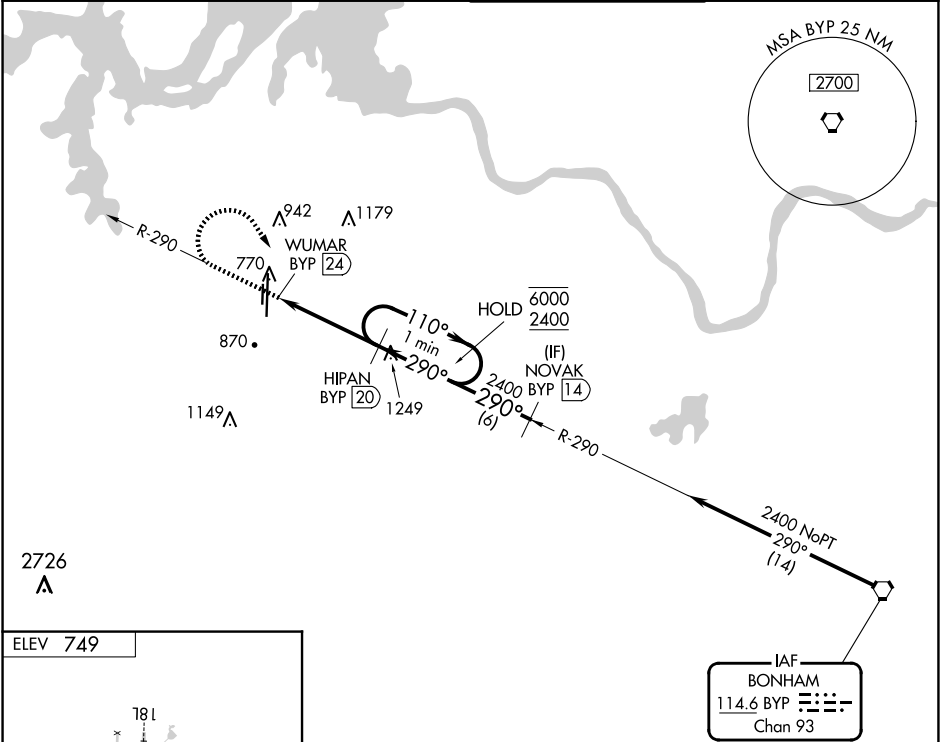


VORTAC BYP	APP CRS	Rwy Idg	N/A
114.6	290°	TDZE	N/A
Chan 93		Apt Elev	749

VOR-A

NORTH TEXAS RGNL/PERRIN FLD (GYI)

DME required.		MISSED APPROACH: Climb to 2000 then climbing right turn to 2400 on heading 140° and BYP VORTAC R-290 to HIPAN/20 DME and hold.	
<div><div></div><div></div></div>	Circling Rwy 18R, 36L NA at night.		
ATIS 118.775	FORT WORTH CENTER 124.75 323.0	NORTH TEXAS TOWER ★ 120.575 (CTAF) 233.7	GND CON 124.125



Procedure NA for arrival on BYP VORTAC airway radials 264 CW 305.			
2000	2400	BYP	HIPAN
↑	hdg 140°	R-290	BYP 20
WUMAR BYP 24		HIPAN BYP 20	One Minute Holding Pattern
290°		2400	110° → 6000
4 NM		← 290°	2400
CATEGORY	A	B	C
CIRCLING	1340-1	591 (600-1)	1400-1¾
			651 (700-1¾)
			1540-2½
			791 (800-2½)