

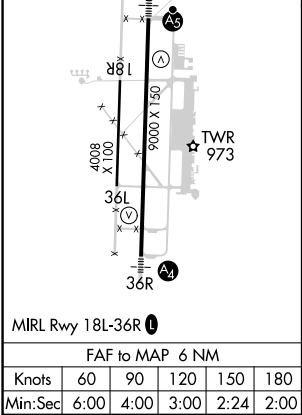
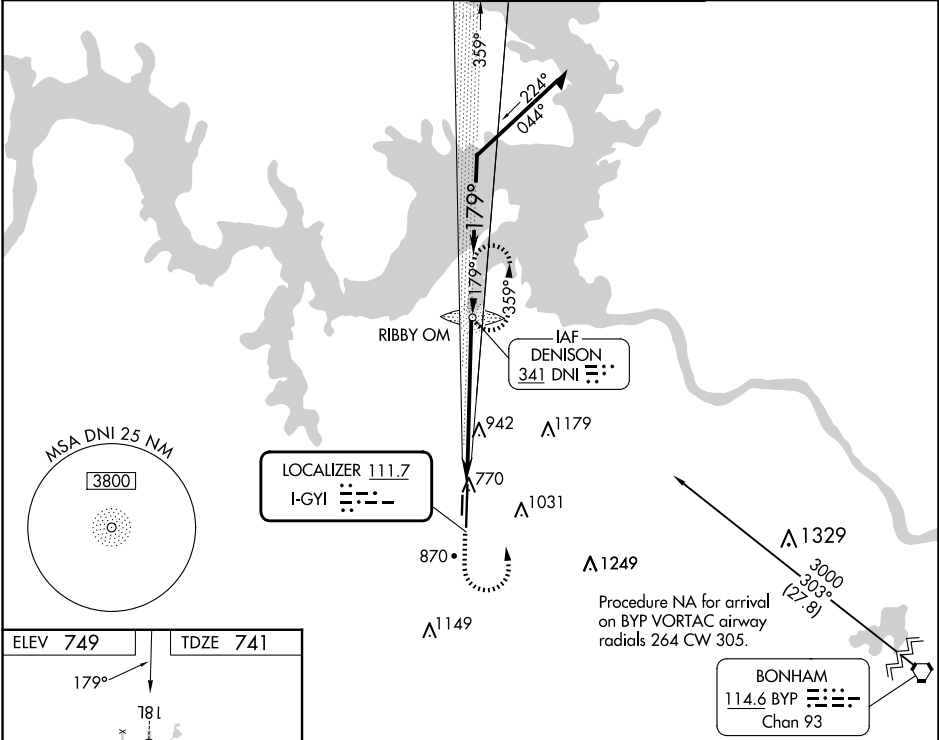
LOC	I-GYI	APP CRS	Rwy Idg	9000
	111.7	179°	TDZE	741
			Apt Elev	749

ILS or LOC RWY 18L

NORTH TEXAS RGNL/PERRIN FLD (GYI)

ADF required.	MALSR	MISSED APPROACH: Climb to 2000 then climbing left turn to 2800 direct DNI NDB and hold.
<div><div>NA</div><div>Circling Rwy 18R, 36L NA at night. Autopilot coupled approach NA below 1900. For inop ALS, increase S-LOC-18L Cat C/D visibility to 1¾ SM.</div></div>	<div><div>A5</div><div></div></div>	

ATIS 118.775	FORT WORTH CENTER 124.75 323.0	NORTH TEXAS TOWER ★ 120.575 (CTAF) 233.7	GND CON 124.125
------------------------	--	--	---------------------------



2000	2800	DNI	DNI NDB RIBBY OM	Remain within 10 NM
VGSI and ILS glidepath not coincident (VGSI Angle 3.00/TCH 48).				
<div><div>2740</div><div>359°</div><div>179°</div><div>2800</div><div>2800</div><div>GS 3.00° TCH 55</div></div>				
CATEGORY	A	B	C	D
S-ILS 18L	941-½ 200 (200-½)			
S-LOC 18L	1220-½ 479 (500-½)		1220-1 479 (500-1)	
<input checked="" type="checkbox"/> CIRCLING	1300-1 551 (600-1)		1400-1¾ 651 (700-1¾) 1540-2½ 791 (800-2½)	

SC-2, 10 JUL 2025 to 07 AUG 2025

SC-2, 10 JUL 2025 to 07 AUG 2025