

WAAS CH <b>69435</b> W15A	APP CRS <b>149°</b>	Rwy Idg TDZE <b>166</b> Apt Elev <b>166</b>	<b>8014</b>
---------------------------------	------------------------	---	-------------

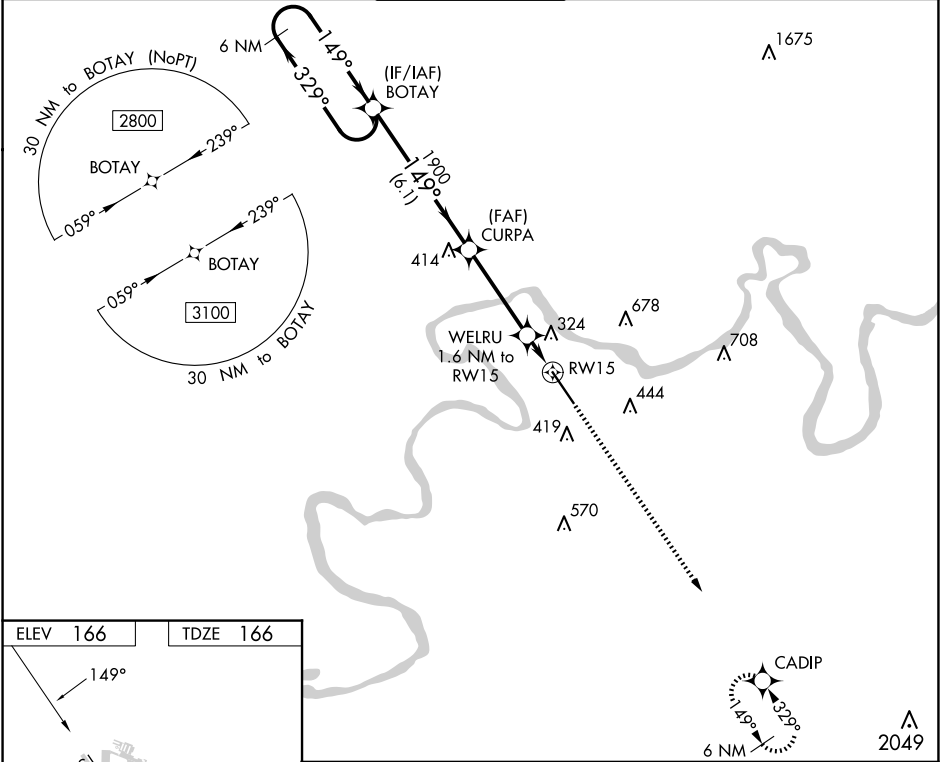
RNAV (GPS) RWY 15

CRAIG FLD (SEM)

**⚠** Baro-VNAV NA when using Montgomery altimeter setting. For uncompensated Baro-VNAV systems, LNAV/VNAV NA below -15°C (5°F) or above 54°C (130°F). DME/DME RNP-0.3 NA. VDP NA with Montgomery altimeter setting. When local altimeter setting not received, use Montgomery altimeter setting and increase all DA 78 feet, all MDA 80 feet, LPV all Cats visibility ¾ mile, LNAV/VNAV all Cats visibility and LNAV Cats C and D visibility ¼ mile, Circling Cat C visibility ½ mile and Cat D visibility ¼ mile.

MISSED APPROACH:  
Climb to 3100 direct CADIP and hold.

AWOS-3PT <b>119.15</b>	MONTGOMERY APP CON ★ <b>124.0 363.025</b>	CRAIG TOWER★ <b>120.85</b>	GND CON <b>121.675</b>	UNICOM <b>122.7 (CTAF) 0</b>
---------------------------	--	-------------------------------	---------------------------	---------------------------------



ELEV 166

TDZE 166

6 NM Holding Pattern BOTAY

VGSI and RNAV glidepath not coincident (VGSI Angle 3.00/TCH 50).

3100 CADIP

2800 ← 329° 149° → 1900 CURPA WELRU 1.6 NM to RW15

GP 3.00° TCH 45

\*1.1 NM to RW15

\*720

6.1 NM 3.7 NM 0.5 NM 1.1 NM

CATEGORY	A	B	C	D
LPV DA	416-¾ 250 (300-¾)			
LNAV/VNAV DA	569-1⅓ 403 (500-1⅓)			
LNAV MDA	560-1	394 (400-1)	560-1⅓	394 (400-1⅓)
CIRCLING	660-1 494 (500-1)	760-1 594 (600-1)	760-1½ 594 (600-1½)	1040-2¾ 874 (900-2¾)

HIRL Rwy 15-33 0

SE-4, 10 JUL 2025 to 07 AUG 2025

SE-4, 10 JUL 2025 to 07 AUG 2025