

APP CRS
185°

Rwly Ldg
TDZE
62

Apt Elev
62

RNAV (RNP) RWY 19

SEBRING RGNL (SEF)

RNP AR APCH GPS.

▼

▲NA

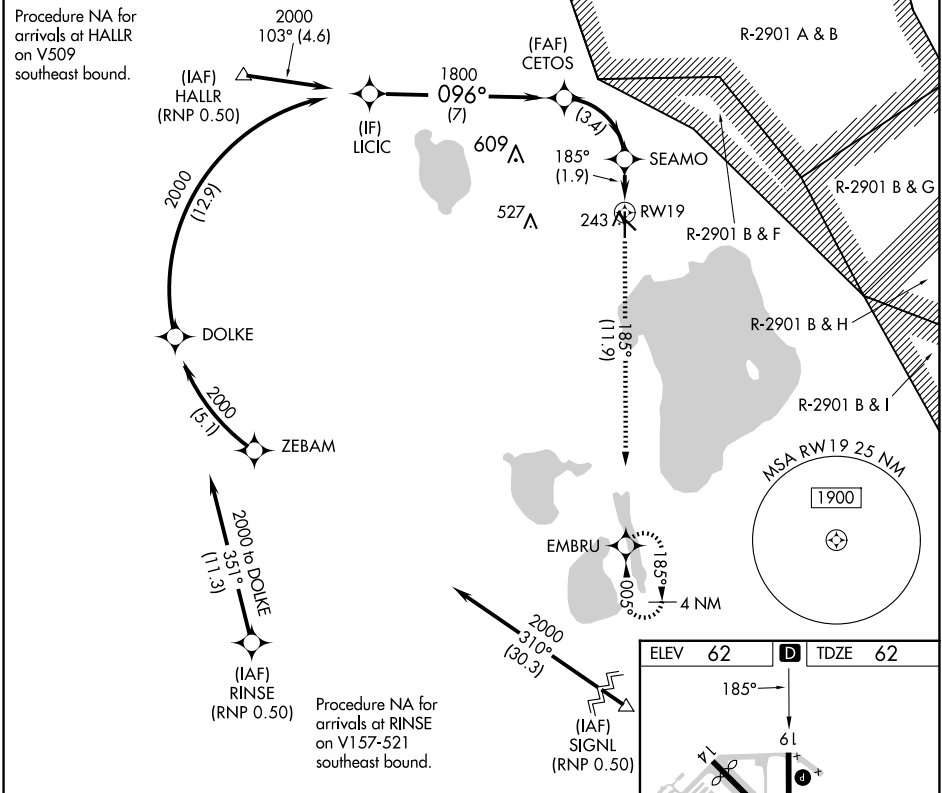
For uncompensated Baro-VNAV systems, procedure
NA below -15°C or above 54°C.

MISSED APPROACH: Climb to 2000
on track 185° to EMBRU and hold.

AWOS-3
119.475

MIAMI CENTER
134.55 257.7

UNICOM
122.7 (CTAF) 0



VGSI and RNAV glidepath not coincident (VGSI Angle 3.00/TCH 42).

LICIC

2000

096°

CETOS

1800

SEAMO

718

RW19

185°

EMBRU

2000

tr 185°

GP 3.00°

TCH 55

7 NM

3.4 NM

1.9 NM

CATEGORY	A	B	C	D
RNP 0.30 DA	440-1¼ 378 (400-1¼)			

AUTHORIZATION REQUIRED

MIRL Rwy 1-19 0

REIL Rwys 1 and 19 0