

SEBRING, FLORIDA

AL-386 (FAA)

25163

WAAS CH 40311 W01A	APP CRS 005°	Rwy Ldg 5234 TDZE 62 Apt Elev 62
--	------------------------	---

RNAV (GPS) RWY 1

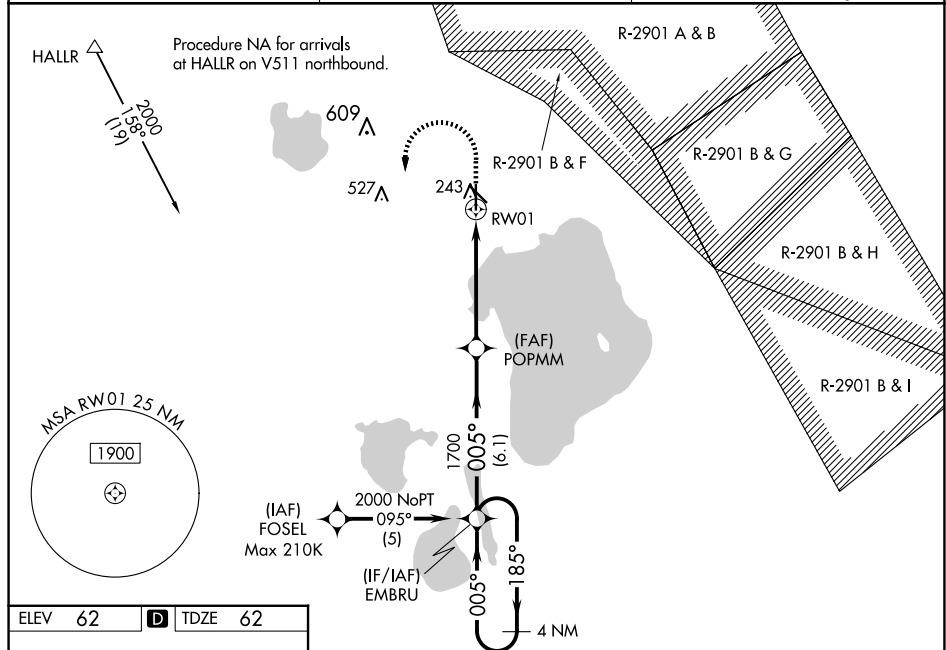
SEBRING RGNL (SEF)

RNP APCH-GPS

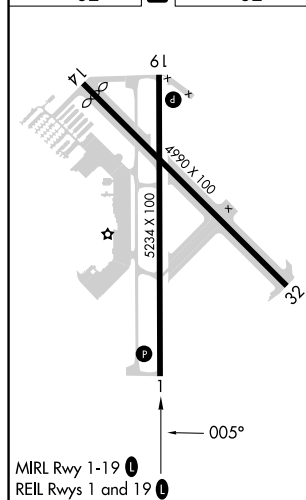
NA For uncompensated Baro-VNAV systems, LNAV/VNAV NA below -15°C or above 54°C. When local altimeter setting not received, use VRB altimeter setting; increase LPV DA to 503 feet and all visibilities ½ SM, increase LNAV/VNAV DA to 530 feet and all visibilities ¾ SM; increase all MDAs 140 feet and LNAV visibility Cats C and D ¾ SM, increase Circling visibility Cat C ½ SM and visibility Cat D ¼ SM. Circling Rwy 14 NA at night. VDP and Baro-VNAV NA when using VRB altimeter. Rwy 1 helicopter visibility reduction below ¾ SM NA.

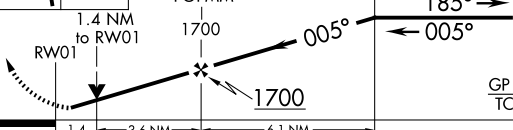
MISSED APPROACH:
Climb to 600 then
climbing left turn to
2000 direct EMBRU
and hold.

AWOS-3 119.475	MIAMI CENTER 134.55 257.7	UNICOM 122.7 (CTAF) ^U
-------------------	------------------------------	-------------------------------------



ELEV	62	D	TDZE	62
------	----	----------	------	----



600 ↑	2000 ↖	EMBRU ✦	4 NM Holding Pattern 			
CATEGORY		A	B	C	D	
LPV DA	381-1 319 (400-1)					
LNAP/ VNAV DA	408-1½ 346 (400-1½)					
LNAP MDA	540-1	478 (500-1)	540-1¾ 478 (500-1¾)			
CIRCLING	600-1	538 (600-1)	600-1½ 538 (600-1½)	880-2¾ 818 (900-2¾)		

SEBRING, FLORIDA
Amdt 1D 17APR25

27°27'N-81°21'W

SEBRING RGNL (SEF)

RNAV (GPS) RWY 1

SE-3, 10 JUL 2025 to 07 AUG 2025

SE-3, 10 JUL 2025 to 07 AUG 2025