

APP CRS	Rwy Idg	<b>9120</b>
<b>135°</b>	TDZE	<b>18</b>
	Apt Elev	<b>22</b>

RNAV (RNP) Z RWY 14R  
BOEING FLD/KING COUNTY INTL (BFI)

RNP AR APCH - GPS.

RADAR required for missed approach.

**T** For uncompensated Baro-VNAV systems, procedure NA below -6°C or above 54°C. For inop ALS, increase RNP 0.15 visibility to 1 <sup>3</sup>/<sub>8</sub> SM.

MALSE

**MISSED APPROACH:** Climb direct OCEZE, cross OCEZE at 1 500, then climb to 5000 on the RNAV missed approach route to CIDUG and hold.

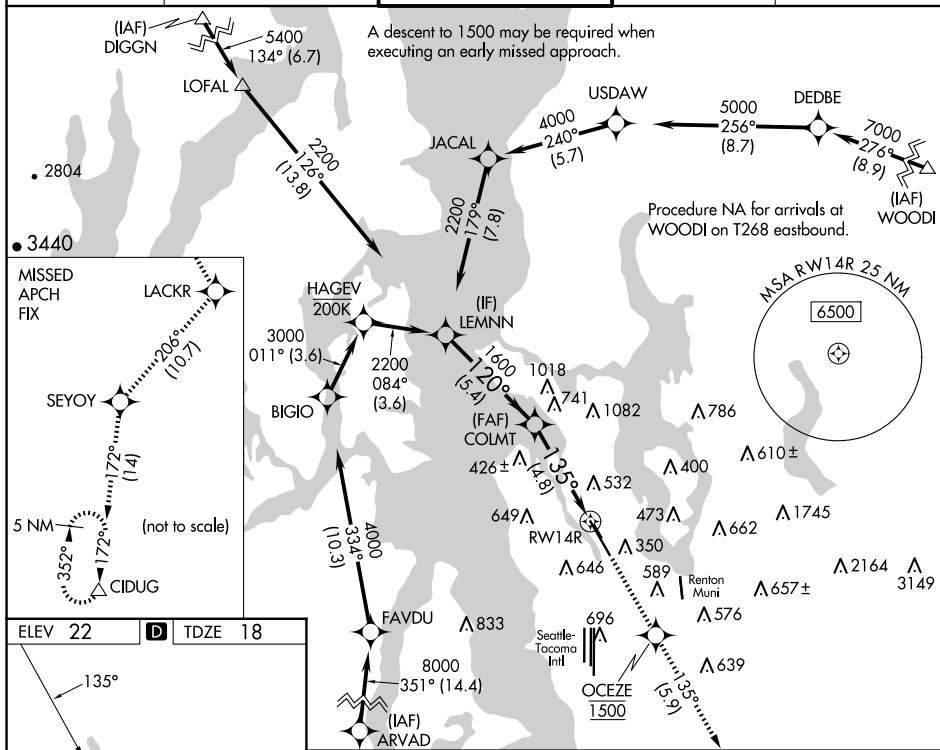
ATIS  
127.75

SEATTLE APP CON  
125.9 306.9

BOEING TOWER  
120.6 257.8

GND CON  
**121.9**

CLNC DEL  
**132.4**



ELEV 22

□

SIZE 18

MIRL Rwy 14L-32R  
HIRL Rwy 14R-32L  
REIL Rwy 14L, 32L and 32R

CATEGORY	A	B	C	D
RNP 0.10 DA		448/50	430 (500-1)	
RNP 0.15 DA		522-1¼	504 (500-1¼)	
RNP 0.30 DA		708-1¾	690 (700-1¾)	

**AUTHORIZATION REQUIRED**

SEATTLE, WASHINGTON

Orig-A 20FEB25

BOEING FLD/KING COUNTY INTL (BFI)

47°32'N-122°18'W

RNAV (RNP) Z RWY 14R

NW-1, 10 JUL 2025 to 07 AUG 2025

NW-1, 10 JUL 2025 to 07 AUG 2025