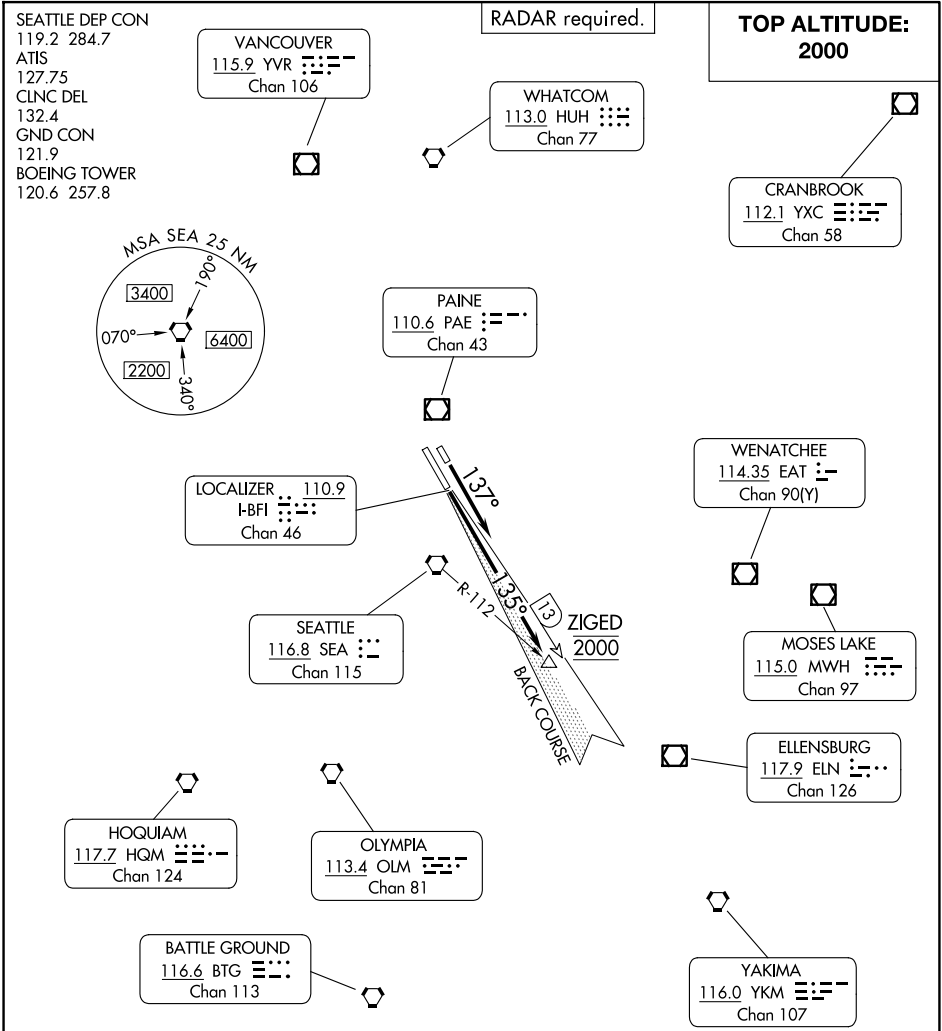


KENT NINE DEPARTURE

BOEING FLD/KING COUNTY INTL (BFI)
SEATTLE, WASHINGTON

AL-384 (FAA)



TAKEOFF MINIMUMS

Rwy 14L: Standard with minimum climb of 708'/NM to 500 or 600-3 with minimum climb of 260'/NM to 700.
Rwy 14R: Standard with minimum climb of 507'/NM to 700 or 600-3 with minimum climb of 260'/NM to 700.

NOTE: Chart not to scale.

(CONTINUED ON FOLLOWING PAGE)

NW-1, 10 JUL 2025 to 07 AUG 2025

NW-1, 10 JUL 2025 to 07 AUG 2025