

WAAS CH <b>93506</b> <b>W05A</b>	APP CRS <b>061°</b>	Rwy Idg TDZE <b>3952</b> Apt Elev <b>3967</b>
--	------------------------	---

RNAV (GPS) RWY 5

SCOTTSBLUFF/WESTERN NEBRASKA RGNL/WM B HEILIG FLD (BFF)

RNP APCH.

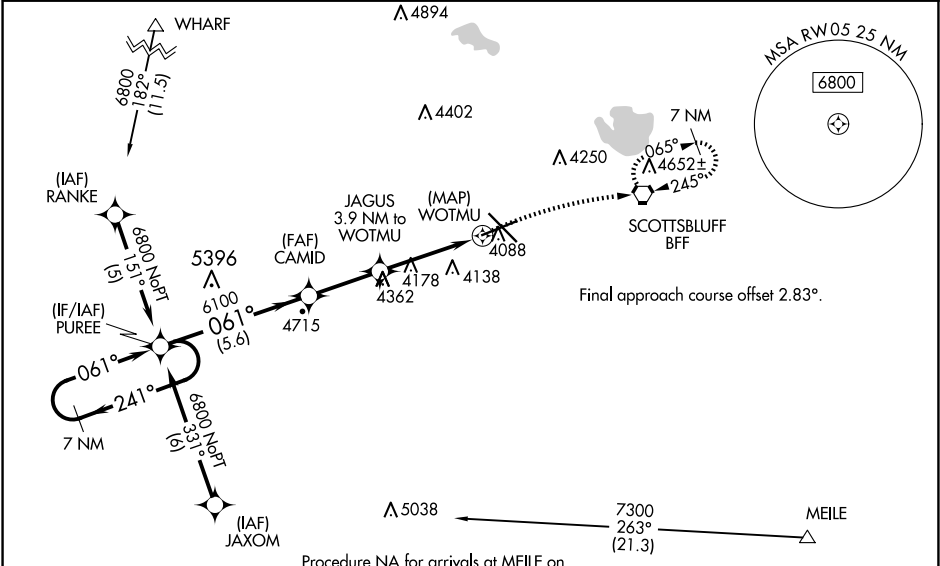
▼

▲

Baro-VNAV NA when using Alliance altimeter setting. For uncompensated Baro-VNAV systems, LNAV/VNAV NA below -22°C (-7°F) or above 51°C (124°F). When local altimeter setting not received, use Alliance altimeter setting and increase all DA 91 feet and all MDA 100 feet; increase LPV all Cats visibility 3⁄8 mile, LNAV/VNAV all Cats visibility 1⁄4 mile, LNAV Cats C/D visibility 1⁄4 mile, Circling Cat C visibility 1⁄2 mile and Cat D visibility 1⁄4 mile.

MISSED APPROACH:  
Climb to 4400 then climbing right turn to 6900 direct BFF VORTAC and hold, continue climb-in-hold to 6900.

ASOS <b>121.025</b>	DENVER CENTER <b>127.95 338.2</b>	UNICOM <b>123.0 (CTAF) 0</b>
------------------------	--------------------------------------	---------------------------------



7 NM Holding Pattern PUREE  
6800  
241°  
061°  
GP 3.00° TCH 50  
CAMID  
6100  
JAGUS 3.9 NM to WOTMU  
WOTMU  
\*5240  
5.6 NM  
2.7 NM  
3.9 NM  
4400  
6900  
BFF  
\*LNAV only

CATEGORY	A	B	C	D
LPV DA	4202-1		250 (300-1)	
LNAV/VNAV DA	4418-1½		466 (500-1½)	
LNAV MDA	4480-1	528 (600-1)	4480-1½	528 (600-1½)
CIRCLING	4500-1	533 (600-1)	4560-1½ 593 (600-1½)	4720-2½ 753 (800-2½)

SCOTTSBLUFF, NEBRASKA  
Amdt 1B 21JUN18

SCOTTSBLUFF/WESTERN NEBRASKA RGNL/WM B HEILIG FLD (BFF)  
41°52'N-103°36' W

ELEV 3967 D TDZE 3952

8002 X 150  
8002 X 150  
4006  
061°

HIRL Rwy 12-30  
MIRL Rwy 5-23

NC-2, 10 JUL 2025 to 07 AUG 2025

NC-2, 10 JUL 2025 to 07 AUG 2025