

WAAS CH 73005 W12A	APP CRS 126°	Rwy Idg 8279 TDZE 3963 Apt Elev 3967
--	------------------------	---

RNAV (GPS) RWY 12

SCOTTSBLUFF/WESTERN NEBRASKA RGNL/WM B HEILIG FLD (BFF)

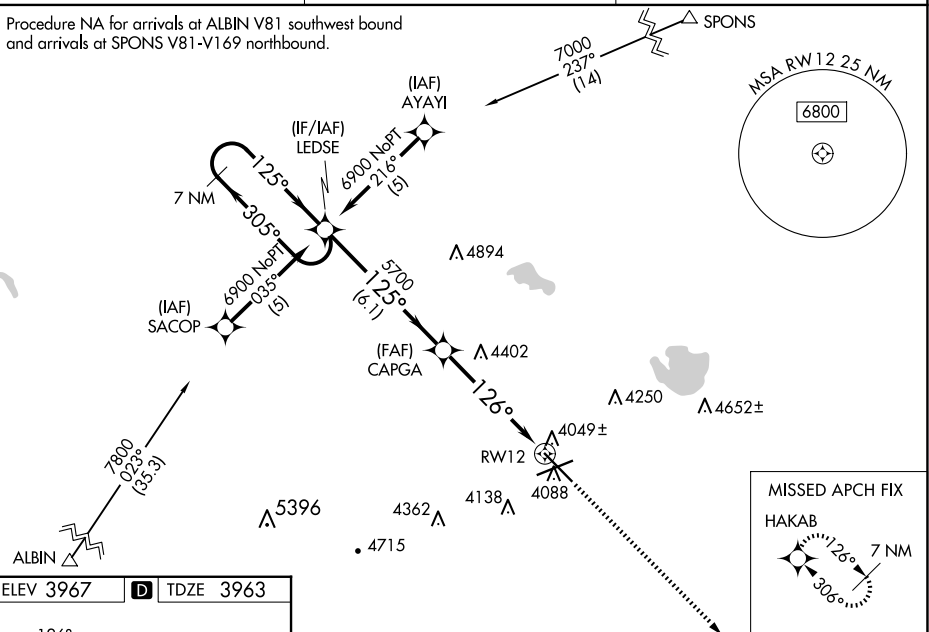
⚠ When local altimeter setting not received, use **Alliance** altimeter setting and increase all DAs 91 feet and all MDAs 100 feet; increase LPV, LNAV/VNAV, LNAV CAT A/B and Circling CAT B visibilities $\frac{1}{4}$ mile; increase LNAV and Circling CAT C/D visibilities $\frac{1}{2}$ mile. For nonprecision approach, when using **Alliance** altimeter setting, increase LPV all CATs visibility to $\frac{1}{4}$, and LNAV CAT A visibility to 1. For uncompensated Baro-VNAV systems, LNAV/VNAV NA below -22°C (-7°F) or above 41°C (105°F). Baro-VNAV NA when using **Alliance** altimeter setting. VDP NA when using **Alliance** altimeter setting. DME/DME RNP 0.3 NA.



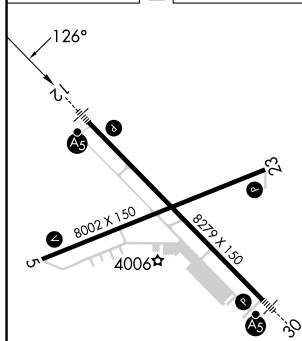
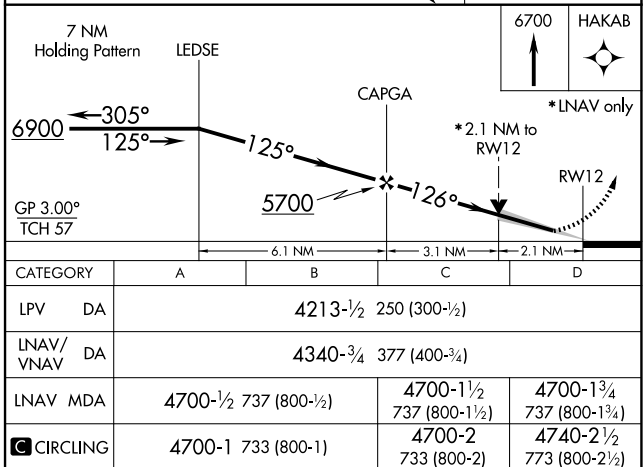
MISSED APPROACH:
Climb to 6700 direct
HAKAB and hold.

ASOS 121.025	DENVER CENTER 127.95 338.2	UNCOM 123.0 (CTAF) 0
------------------------	--------------------------------------	--------------------------------

Procedure NA for arrivals at ALBIN V81 southwest bound and arrivals at SPONS V81-V169 northbound.



ELEV 3967	D	TDZE 3963
-----------	----------	-----------

HIRL Rwy 12-30 **L**MIRL Rwy 5-23 **L**

SCOTTSBLUFF, NEBRASKA

Amdt 1A 30JAN20

SCOTTSBLUFF/WESTERN NEBRASKA RGNL/WM B HEILIG FLD (BFF)

41°52'N-103°36' W

RNAV (GPS) RWY 12