

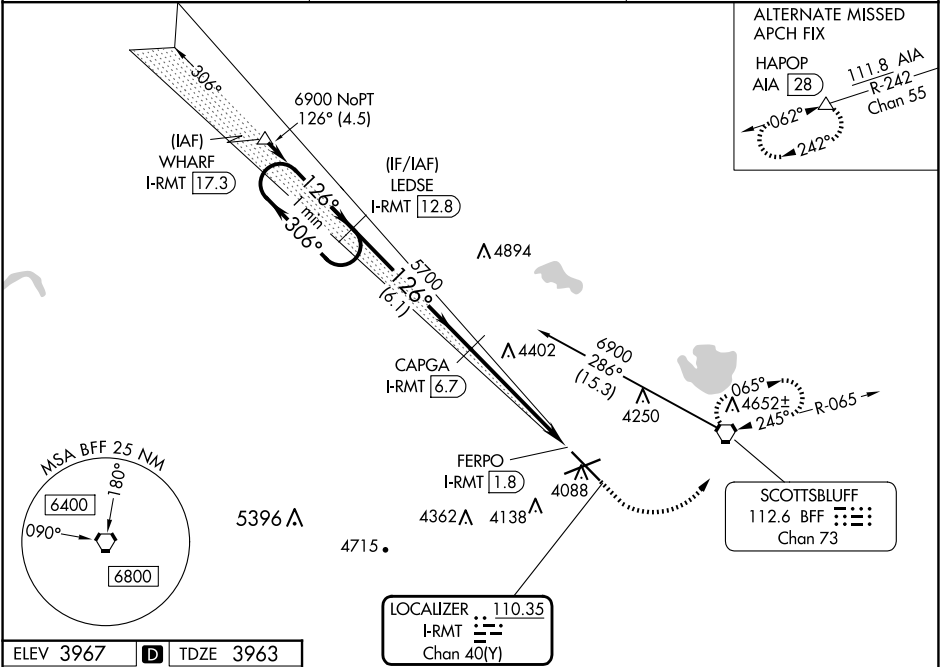
LOC/DME I-RMT	APP CRS	Rwy Idg
<b>110.35</b>	<b>126°</b>	<b>8279</b>
Chan <b>40</b> (Y)		TDZE <b>3963</b>
		Apt Elev <b>3967</b>

**ILS or LOC/DME RWY 12**  
SCOTTSBLUFF/WESTERN NEBRASKA RGNL/WM B HEILIG FLD (BFF)

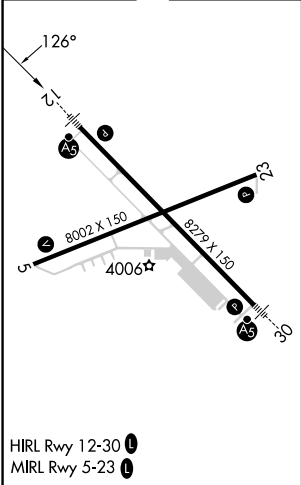
**⚠** When local altimeter setting not received, use Alliance altimeter setting and increase DA 91 feet; all MDAs 100 feet, and S-LOC 12 and Circling Cat B/C/D visibilities ¼ mile. For inoperative MALSR, when using Alliance altimeter setting, increase S-ILS 12 visibility to 1. VDP NA when using Alliance altimeter setting.

**MALSR**  
**A5**  
**MISSED APPROACH:** Climb to 4500 then climbing left turn to 6900 direct BFF VORTAC and hold, continue climb-in-hold to 6900.

ASOS <b>121.025</b>	DENVER CENTER <b>127.95 338.2</b>	UNICOM <b>123.0</b> (CTAF) <b>0</b>
------------------------	--------------------------------------	--



ELEV 3967	<b>D</b>	TDZE 3963
-----------	----------	-----------



ILS unusable from FERPO/1.8 DME inbound.			
One Minute Holding Pattern			
LEDSE I-RMT 12.8			
CAPGA I-RMT 6.7			
GS 3.00° TCH 57			
6.1 NM			
3.2 NM			
1.7 NM			
0.3			
CATEGORY	A	B	C
S-ILS 12	4163-½ 200 (200-½)		
S-LOC 12	4640-½ 677 (700-½)	4640-1½ 677 (700-1½)	4640-1¾ 677 (700-1¾)
CIRCLING	4640-1 673 (700-1)	4640-2 673 (700-2)	4740-2½ 773 (800-2½)

NC-2, 10 JUL 2025 to 07 AUG 2025

NC-2, 10 JUL 2025 to 07 AUG 2025