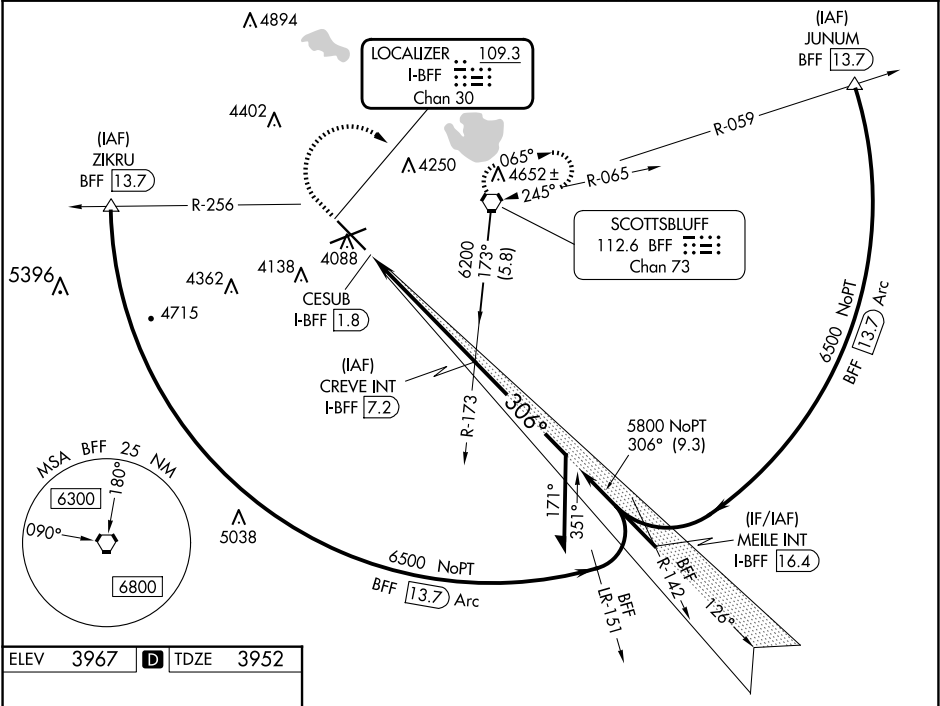


LOC/DME I-BFF	APP CRS	Rwy Idg
109.3	306°	8279
Chan 30		TDZE
		3952
		Apt Elev
		3967

ILS or LOC RWY 30
SCOTTSLUFF/WESTERN NEBRASKA RGNL/WM B HEILIG FLD (B'F'F')

<p>▼</p> <p>▲ For inop ALS, increase S-LOC 30 Cats C and D visibility to 1 SM.</p>	<p>MALSR</p> <p>A5</p>	<p>MISSED APPROACH: Climb to 5800 then climbing right turn to 6200 direct BFF VORTAC and hold.</p>
<p>ASOS</p> <p>121.025</p>	<p>DENVER CENTER</p> <p>127.95 338.2</p>	<p>UNICOM</p> <p>123.0 (CTAF) 0</p>



The diagram illustrates the runway configuration at a specific airport. Runway 12-30 is oriented horizontally and has a length of 8002 feet and a width of 150 feet. Runway 5-23 is oriented vertically and has a length of 8279 feet and a width of 150 feet. The runways intersect at a 90-degree angle. The diagram also shows the location of the runway lights and the surrounding terrain. The runway 12-30 is marked with '12' at the top and '30' at the bottom. The runway 5-23 is marked with '5' on the left and '23' on the right. The diagram also shows the location of the runway lights and the surrounding terrain. The runway 12-30 is marked with '12' at the top and '30' at the bottom. The runway 5-23 is marked with '5' on the left and '23' on the right.


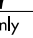

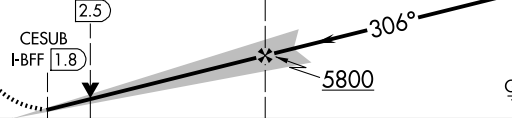
HIRL Rwy 12-30 0

MIRL Rwy 5-23 0

FAF to MAP 5.4 NM

Knots	60	90	120	150	180
Min:Sec	5:24	3:36	2:42	2:10	1:48

Min:Sec 5:24 3:36 2:42 2:10 1:48

5800	6200	BFF		
				
* LOC only				
				
CATEGORY	A	B	C	D
S-ILS 30	4152-½ 200 (200-½)			
S-LOC 30	4300-½ 348 (400-½)		4300-⅝ 348 (400-⅝)	
C CIRCLING	4500-1 533 (600-1)		4560-1½ 593 (600-1½)	4740-2½ 773 (800-2½)