

WAAS CH 97622 W28A	APP CRS 282°	Rwy Idg TDZE 323 Apt Elev 378
--	------------------------	---

RNAV (GPS) RWY 28

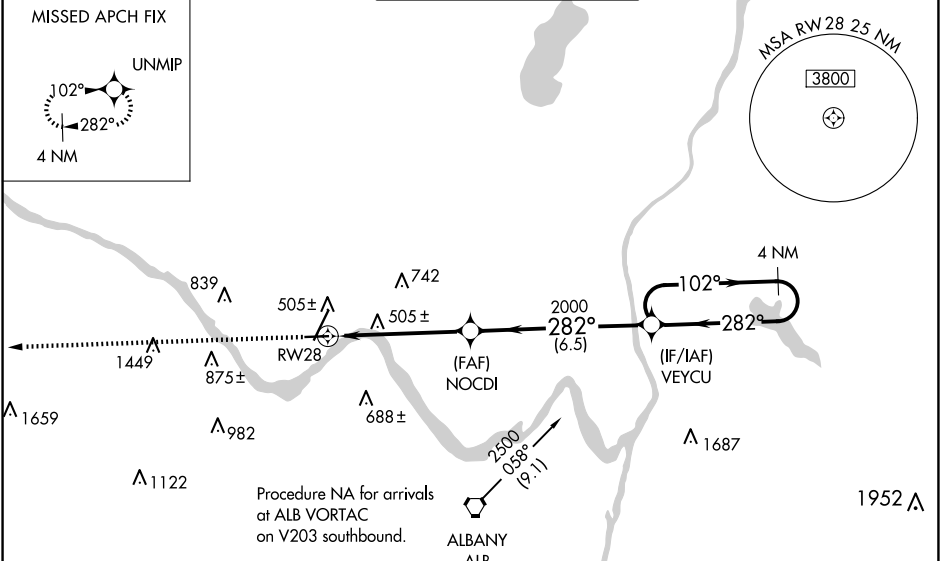
SCHENECTADY COUNTY (SCH)

NA

Circling Rwy 10 NA at night. Baro-VNAV NA when using Albany altimeter setting. For uncompensated Baro-VNAV systems, LNAV/VNAV NA below -15°C (5°F) or above 54°C (130°F). DME/DME RNP-0.3 NA. Helicopter visibility reduction below 1 SM NA. When local altimeter setting not received, use Albany altimeter setting and increase all DA 33 feet and all MDA 40 feet; increase LNAV/VNAV all Cats visibility and LNAV Cat C/D visibility ½ mile.

MISSED APPROACH:
Climb to 3000 direct UNMP and hold.

AWOS-3 119.275	ALBANY APP CON 132.825 263.075	SCHENECTADY TOWER ★ 121.3 (CTAF) 321.1	GND CON 121.9	UNICOM 122.95
--------------------------	--	--	-------------------------	-------------------------



3000

UNMP

NOCDI

2000

VEYCU

4 NM Holding Pattern

102°

282°

2500

GP 3.00°

TCH 52

RW28

5.1 NM

6.5 NM

CATEGORY	A	B	C	D
LPV DA	618-1 295 (300-1)			
LNAV/VNAV DA	774-1½ 451 (400-1½)			
LNAV MDA	820-1 497 (500-1)	820-1¾ 497 (500-1¾)		
CIRCLING	880-1 502 (600-1)	940-1 562 (600-1)	1120-2¼ 742 (800-2¼)	1320-3 942 (1000-3)

ELEV 378

TDZE 323

TWR 389

0.9% Up

4850 X 150

700 X 150

282°

REIL Rwy 28
HIRL Rwy 4-22
MIRL Rwy 10-28