

VOR/DME RWY 28

VOR/DME SVN <b>111.6</b> Chan <b>53</b>	APCH CRS <b>282°</b>	Rwy Idg <b>11,393</b> TDZE <b>41</b> Arpt Elev <b>41</b>
---	-------------------------	--

[USA]

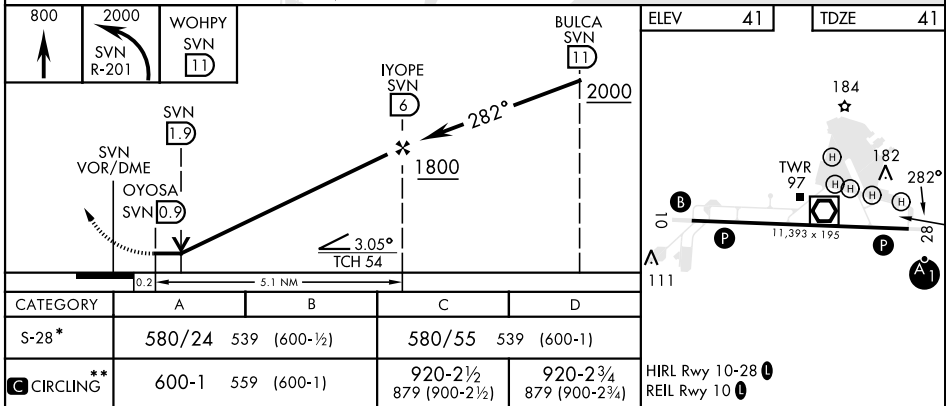
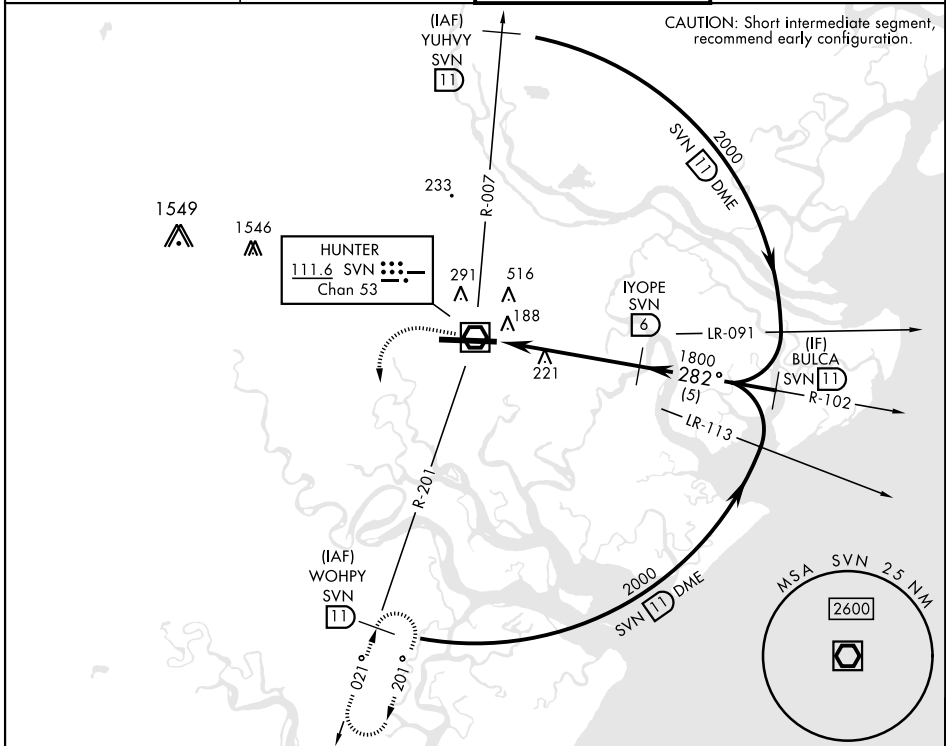
HUNTER AAF (KSVN)

\* When ALS inop, increase CAT AB RVR to 55,  
vis to 1 mile; CAT CD vis to 1 3/8 miles.  
\*\* Circling not authorized N of Rwy 10-28 for CAT D.



**MISSED APPROACH:** Climb to 800, then climbing left turn to 2000 via SVN VOR/DME R-201 to WOHYP/11 DME and hold.

<p>ATIS ★</p> <p>127.525 323.125</p>	<p>SAVANNAH APP CON★</p> <p>120.4 353.775</p>	<p>TOWER★</p> <p>124.975 (CTAF) 0 279.575</p>	<p>GND CON ★</p> <p>121.8 291.675</p>
--------------------------------------	---	---	---------------------------------------



SAVANNAH, GEORGIA

32°01'N-81°09'W

HUNTER AAF (KSVN)

Amdt 2 21MAR24

VOR/DME RWY 28

SE-4, 10 JUL 2025 to 07 AUG 2025

SE-4: 10 JUL 2025 to 07 AUG 2025