

ILS or LOC RWY 28

LOC/DME I-SVN	APCH CRS	Rwy Idg
109.5	276°	11,393
Chan 32		TDZE 41
		Arpt Elev 41

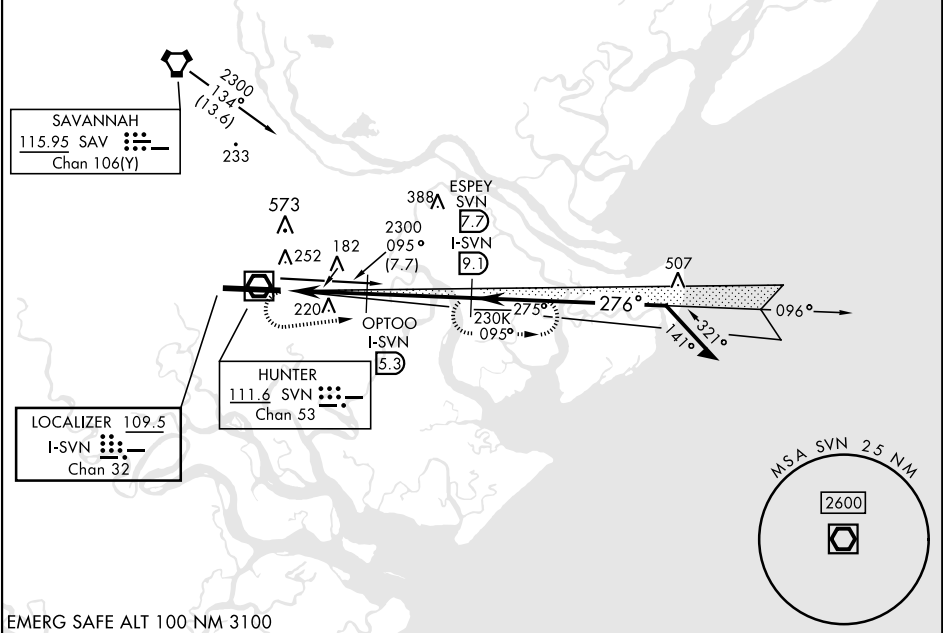
[USA]

HUNTER AAF (KSVN)

DME required	ALSF-1	MISSED APPROACH: Climb to 1000, then climbing left turn to 2300 heading 050° and on SVN VOR/DME R-095 to ESPEY/ SVN 7.7 DME and hold.
▼ * When ALS inop, increase RVR to 40, vis to ¾ mile. ** When ALS inop, increase CAT AB RVR to 55, vis to 1 mile, CAT CD vis to 1¼ miles. *** When ALS inop, increase CAT AB RVR to 55, vis to 1 mile, CAT CD vis to 1½ miles.		

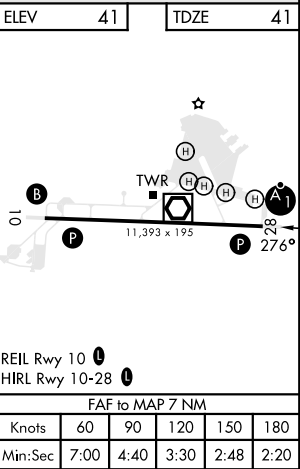
ATIS ★ 127.525 323.125	SAVANNAH APP CON ★ 120.4 353.775	TOWER ★ 124.975 (CTAF) 279.575	GND CON ★ 121.8 291.675
---------------------------	-------------------------------------	-----------------------------------	----------------------------

\*\*\*\* Circling not authorized for CAT CD N of Rwy 10-28.



EMERG SAFE ALT 100 NM 3100

1000	2300	ESPEY I-SVN 7.7	ESPEY I-SVN 7.7	ELEV 41	TDZE 41
hdg 050°					
I-SVN 2.7	I-SVN 3.3	OPTOO I-SVN 5.3	OPTOO I-SVN 5.3		
1100	2300	096°	276°	2300	GS 3.00° TCH 52
3.2 NM	3.8 NM				
CATEGORY	A	B	C	D	
S-ILS 28*	241/24	200	(200-½)		
S-LOC 28**	480/24 439 (500-½)	480/40 439 (500-¾)			
**** CIRCLING	600-1 559 (600-1)	600-1½ 559 (600-1½)	620-2 579 (600-2)		
LOCAL ALTIMETER, WITHOUT LAST STEPDOWN FIX					
S-LOC 28***	600/24 559 (600-½)	600/60 559 (600-1½)			
**** CIRCLING	600-1 559 (600-1)	600-1½ 559 (600-1½)	579 (600-2)		



ILS or LOC RWY 28