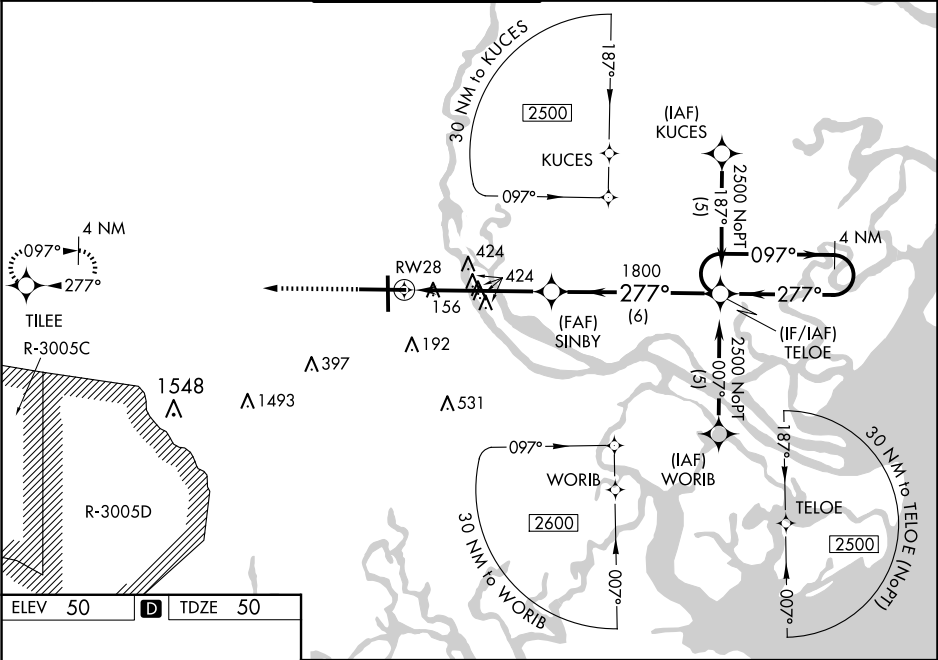


WAAS CH 40015 W28A	APP CRS 277°	Rwy Idg 9351 TDZE 50 Apt Elev 50
--	------------------------	---

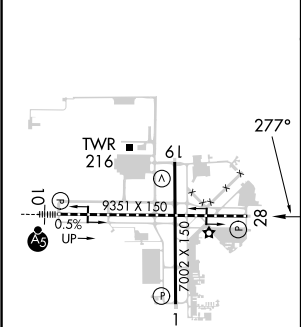
RNAV (GPS) Z RWY 28
SAVANNAH/HILTON HEAD INTL (SAV)

RNP APCH.	MISSED APPROACH: Climb to 2600 direct TILEE and hold.
<div><div>T</div><div>A</div></div> <div>For uncompensated Baro-VNAV systems, LNAV/VNAV NA below -15°C (5°F) or above 49°C (120°F).</div>	

ATIS 123.75	SAVANNAH APP CON* 125.3 371.875	SAVANNAH TOWER* 125.975 (CTAF) 0 257.8	GND CON 121.9 348.6	CLNC DEL 119.55 291.775	UNICOM 122.95
-----------------------	---	--	-------------------------------	-----------------------------------	-------------------------



ELEV 50	D	TDZE 50
---------	----------	---------



TDZ/CL Rwy 10
REIL Rws 19 and 28
HIRL Rws 1-19 and 10-28

2600	TILEE	VGSI and RNAV glidepath not coincident (VGSI Angle 3.00/TCH 66).	TELOE	4 NM Holding Pattern
*LNAV only.	SINBY	1800	277°	2500
1.8 NM	3.5 NM	6 NM	GP 3.00° TCH 52	
CATEGORY	A	B	C	D
LPV DA	307-1	257 (300-1)		
LNAV/VNAV DA	431-1¼	381 (400-1¼)		
LNAV MDA	680-1	630 (700-1)	680-1¾	630 (700-1¾)
C CIRCLING	680-1	630 (700-1)	740-2 690 (700-2)	740-2¼ 690 (700-2¼)