

LOC I-SAV <b><u>111.35</u></b> Chan <b>50 (Y)</b>	APP CRS <b>097°</b>	Rwy Idg <b>9351</b> TDZE <b>30</b> Apt Elev <b>50</b>
---	------------------------	---

**ILS RWY 10 (SA CAT I & II)**  
SAVANNAH/HILTON HEAD INTL (SAV)

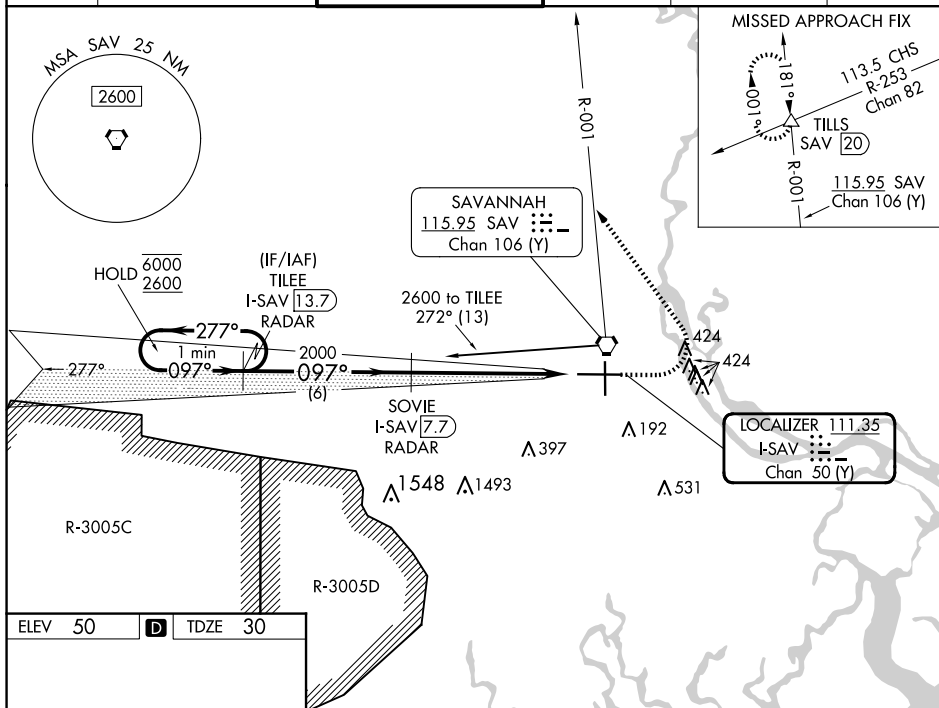
DME required.

**T** SA CAT I: Requires specific OPSPEC, MSPEC, or LOA approval and use of HUD to DH. SA CAT II: Reduced lighting: Requires specific OPSPEC, MSPEC, or LOA approval and use of autoland or HUD to touchdown. Procedure NA when tower closed.

MALSR

**MISSED APPROACH:** Climb to 800 then climbing left turn to 4000 on heading 330° and SAV VORTAC R-001 to TILLS INT/SAV 20 DME and hold.

ATIS 123.75	SAVANNAH APP CON★ 125.3 371.875	SAVANNAH TOWER★ 125.975 (CTAF) 0 257.8	GND CON 121.9 348.6	CLNC DEL 119.55 291.775	UNICOM 122.95
----------------	------------------------------------	---	------------------------	----------------------------	------------------

[illegible]

CATEGORY	A	B	C	D
S-ILS 10	SA CAT I	RA 162/14	150	DA 180
S-ILS 10	SA CAT II	RA 116/12	100	DA 130

SA CATEGORY I & II ILS - SPECIAL AIRCREW  
& AIRCRAFT CERTIFICATION REQUIRED

SAVANNAH, GEORGIA  
Amdt 29 08NOV18

32°08'N-81°12'W SAVANNAH/HILTON HEAD INTL (SAV)  
ILS RWY 10 (SA CAT I & II)

SE-4, 10 JUL 2025 to 07 AUG 2025

SE-4, 10 JUL 2025 to 07 AUG 2025