

LOC/DME I-SMX	APP CRS	Rwy Idg	8004
108.9	120°	TDZE	230
Chan 26		Apt Elev	261

ILS or LOC RWY 12

SANTA MARIA PUB/CAPT G ALLAN HANCOCK FLD (SMX)

Night Landing: Rwy 2 NA. VDP NA when using San Luis Obispo altimeter setting. When local altimeter setting not received, use San Luis Obispo altimeter setting and increase DA to 489 feet; increase all MDA 60 feet and S-LOC visibility Cat C and D to RVR 5500. For inop MALS, increase S-LOC 12 Cat C/D visibility to 1½ mile.  
# RVR 1800 authorized with use of FD or AP or HUD to DA; NA when using San Luis Obispo altimeter setting.

MALS

MISSED APPROACH: Climb to 800, then climbing left turn to 5000 direct MQO VORTAC and hold.

ATIS	SANTA BARBARA APP CON*	SANTA MARIA TOWER*	GND CON	UNICOM
121.15	124.15 327.8	118.3 (CTAF) 239.25	121.9	122.95

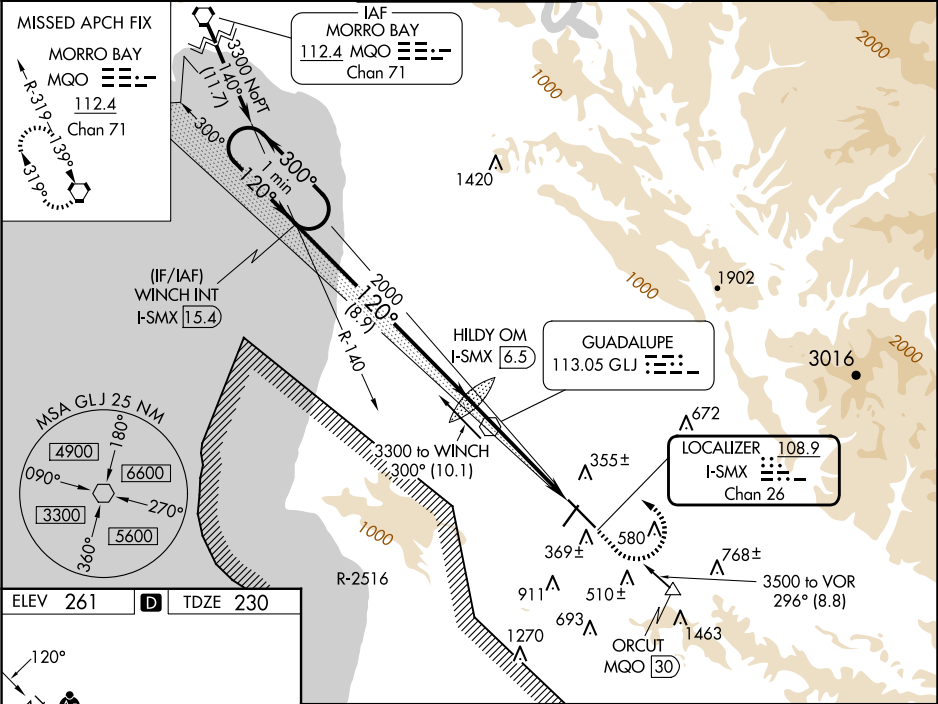


Diagram illustrating the HIRL Rwy 12-30 profile. The profile shows a 1.50% up slope, a 0.3% up slope, and a 0.6% down slope. A star symbol indicates TWR 321. A distance of 8000 X 130 is marked.

HIRL Rwy 12-30

FAF to MAP 5 NM

Knots	60	90	120	150	180
Min:Sec	5:00	3:20	2:30	2:00	1:40

One Minute Holding Pattern	WINCH I-SMX 15.4	HILDY OM I-SMX 6.5	800	5000	MQO
* LOC only.					
3300 ← 300° → 120° → 120° → 1886					
GS 3.00° TCH 55					
8.9 NM 3.8 NM 1.2 NM					
CATEGORY	A	B	C	D	
S-ILS 12#	430/24 200 (200-½)				
S-LOC 12	680/24 450 (500-½)		680/50 450 (500-1)		
CIRCLING	860-1 599 (600-1)	1000-1 739 (800-1)	1420-3 1159 (1200-3)	1520-3 1259 (1300-3)	