

VORTAC GVO	APP CRS	Rwy Ldg
113.8	280°	6052
Chan 85		TDZE 14
		Apt Elev 14

VOR RWY 25

SANTA BARBARA MUNI (SBA)

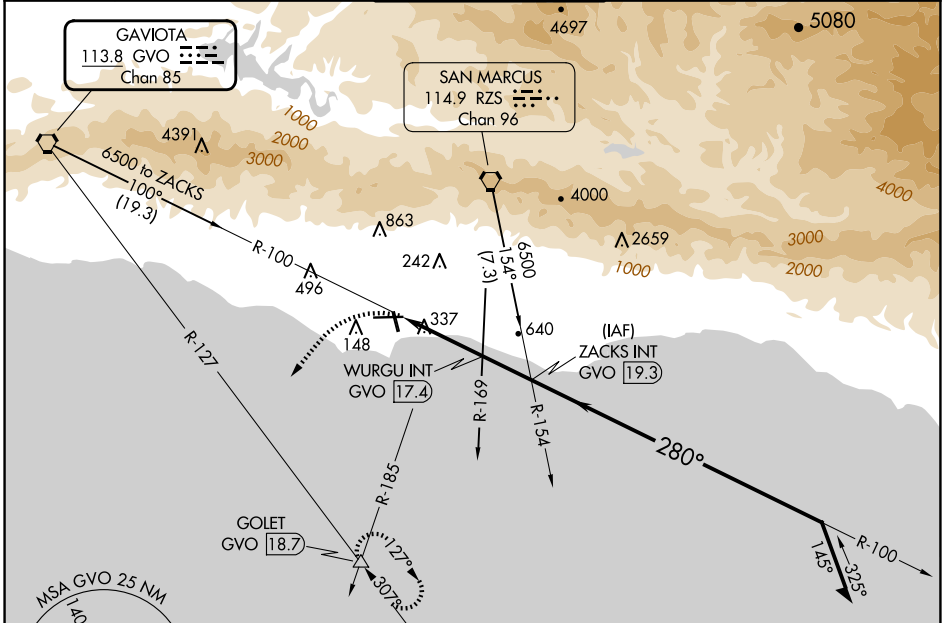
⚠

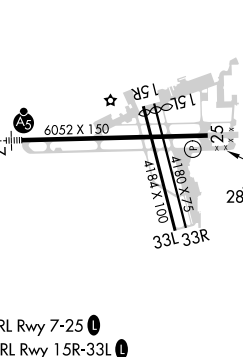
⚠

Circling Rwy 15L/R and 33L/R NA at night. Rwy 25 helicopter visibility reduction below 1 SM NA. Circling NA for Cats C and D north of Rwy 7-25. Procedure NA at night. When local altimeter setting not received, use OXR altimeter setting and increase all MDAs 100 feet and S-25 visibility Cat B/C/D ½ SM and Circling visibility Cat B/C ¼ SM.

MISSED APPROACH: Climbing left turn to 4000 on heading 205° and GVO R-127 to GOLET INT and hold, continue climb-in-hold to 4000.

ATIS 132.65	SANTA BARBARA APP CON* 120.55 319.15 (151°-329°) 125.4 291.1 (330°-150°)	SANTA BARBARA TOWER* 119.7 (CTAF) 0 254.35	GND CON 121.7	CLNC DEL 132.9	UNICOM 122.95
-----------------------	--	---	-------------------------	--------------------------	-------------------------



ELEV 14	D	TDZE 14			
					
HIRL Rwy 7-25 L					
MIRL Rwy 15R-33L L					
REIL Rws 15R and 25 L					
FAF to MAP 5.1 NM					
Knots	60	90	120	150	180
Min:Sec	5:06	3:24	2:33	2:02	1:42