

WAAS CH <b>78306</b> <b>W07A</b>	APP CRS <b>074°</b>	Rwy Ldg <b>6052</b> TDZE <b>13</b> Apt Elev <b>14</b>
--	------------------------	---

RNAV (GPS) RWY 7  
SANTA BARBARA MUNI (SBA)

RNP APCH - GPS.

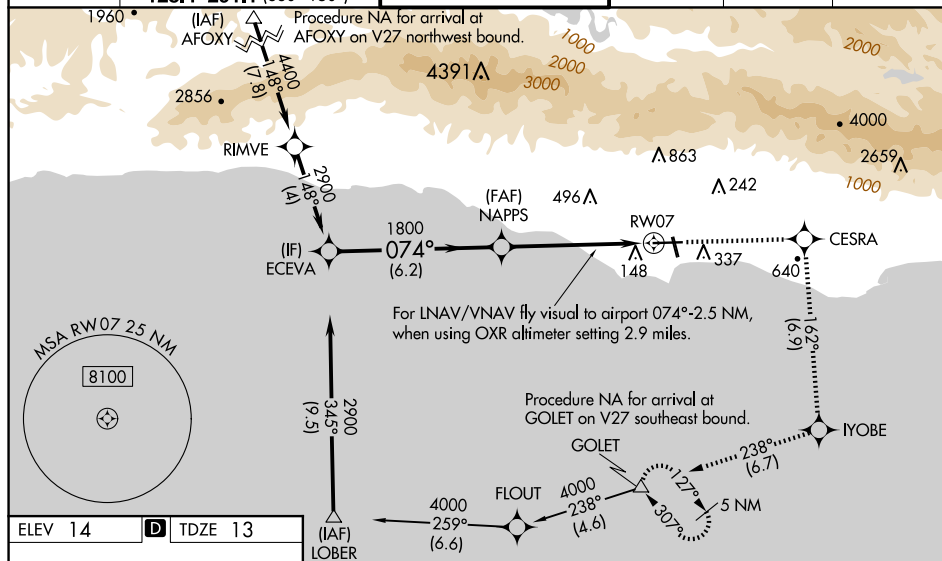
**T** For uncompensated Baro-VNAV systems, LNAV/VNAV NA below 3°C or above 54°C. Circling Rwy 15L/R and 33L/R NA at night. Rwy 7 helicopter visibility reduction below RVR 4000 NA. When local altimeter setting not received, use OXR altimeter setting and increase LPV DA to 392 feet; increase LNAV/VNAV DA to 686 feet and all visibilities ¼ SM. Increase all MDAs 100 feet, and LNAV visibility Cat C and D ½ SM, and Circling visibility Cat A/C SM. VDP and Baro-VNAV NA when using OXR altimeter setting. For inop ALS, increase LPV all Cats visibility to RVR 4500 and LNAV Cat A to RVR 5500 and Cat C/D to 2 ½ SM. For inop ALS when using OXR altimeter setting, increase LPV all Cats visibility to RVR 5500 and LNAV/VNAV all Cats visibility to 1 ½ SM. Circling NA for Cats C and D north of Rwy 7-25.

MALSR

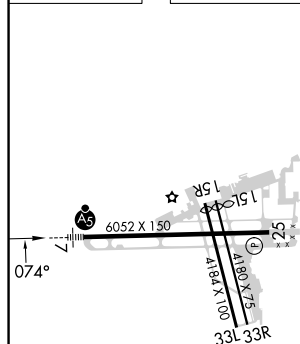


**MISSED APPROACH:** Climb to 4000 direct CESRA and right turn on track 162° to IYOBE and right turn on track 238° to GOLET and hold, continue climb-in-hold to 4000.

ATIS <b>132.65</b>	SANTA BARBARA APP CON★ <b>120.55 319.15</b> (151°-329°) <b>125.4 291.1</b> (330°-150°)	SANTA BARBARA TOWER★ <b>119.7</b> (CTAF) <b>0 254.35</b>	GND CON <b>121.7</b>	CLNC DEL <b>132.9</b>	UNICOM <b>122.95</b>
-----------------------	--	---	-------------------------	--------------------------	-------------------------



ELEV 14	<b>D</b>	TDZE 13
---------	----------	---------



HIRL Rwy 7-25 **L**  
MIRL Rwy 15R-33L **L**  
REIL Rwys 15R and 25 **L**

SANTA BARBARA, CALIFORNIA  
Amdt 1 20FEB25

34°26'N-119°50'W

SANTA BARBARA MUNI (SBA)  
RNAV (GPS) RWY 7

SW-3, 10 JUL 2025 to 07 AUG 2025

<p>ECEVA</p> <p>2900</p> <p>GP 3.00° TCH 52</p>		<p>NAPPS</p> <p>1800</p>		<p>4000</p> <p>CESRA</p> <p>tr 162°</p>		<p>IYOBE</p> <p>tr 238°</p>		<p>GOLET</p> <p>△</p>	
<p>074°</p> <p>1800</p>		<p>2.4 NM to RW07</p>		<p>RW07</p>		<p>For LNAV/VNAV fly visual to airport, 074° -2.5 NM, when using OXR altimeter setting 2.9 miles.</p>			
<p>6.2 NM</p>		<p>3.1 NM</p>		<p>2.4 NM</p>					
CATEGORY	A		B		C		D		
LPV DA	309/40 296 (300-¾)								
LNAV/VNAV DA	603-1¼ 590 (600-1¼)								
LNAV MDA	820/40 807 (900-¾)			820-1⅞ 807 (900-1½)					
CIRCLING	820-1 806 (900-1)		840-1¼ 826 (900-1¼)		840-2½ 826 (900-2½)		1000-3 986 (1000-3)		