

LOC/DME I-SBA	APP CRS	Rwy Ldg
<b>110.3</b>	<b>075°</b>	<b>6052</b>
Chan <b>40</b>		TDZE <b>13</b>
		Apt Elev <b>14</b>

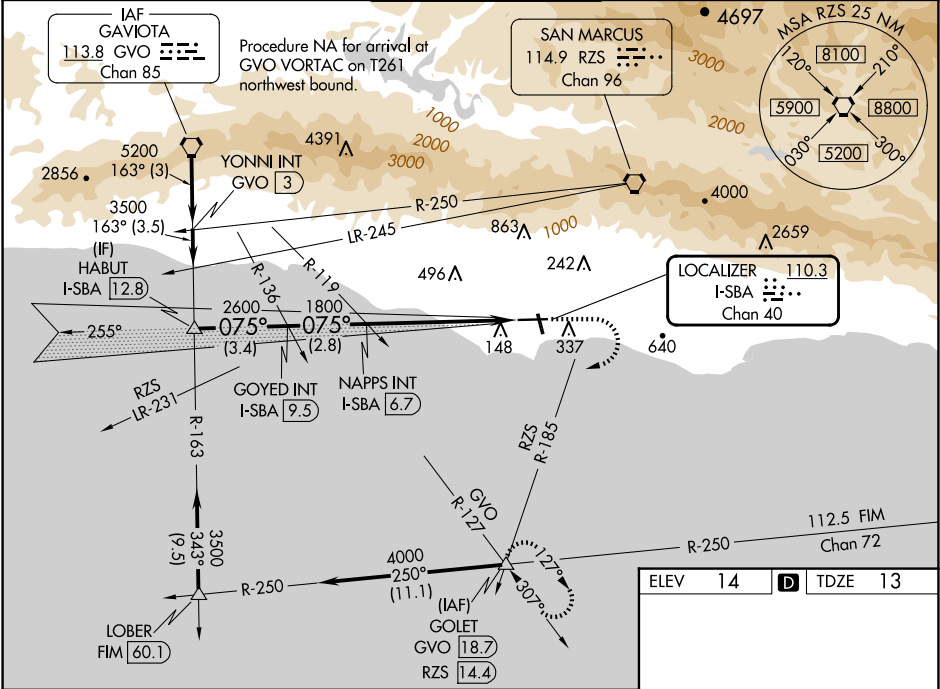
ILS or LOC RWY 7  
SANTA BARBARA MUNI (SBA)

**⚠** VDP NA when using OXR altimeter setting. Circling Rwy 15 L/R and 33 L/R NA at night. Rwy 7 helicopter visibility reduction below RVR 4000 NA. When local altimeter setting not received, use OXR altimeter setting and increase S-ILS 7 DA to 386 feet; increase all MDAs 100 feet; and Circling visibility Cat A/C ¼ SM. For inop ALS when using OXR altimeter setting, increase S-ILS 7 all Cats visibility to RVR 5000, and S-LOC 7 Cat A/B to RVR 5500. Circling NA for Cats C and D north of Rwy 7-25. For inop ALS, increase S-ILS 7 all Cats visibility to RVR 4500 and S-LOC 7 Cat A/B to RVR 5500.

**MALSR**  
**AS**

**MISSED APPROACH:**  
Climb to 700 then climbing right turn to 4000 on RZS VORTAC R-185 to GOLET INT/RZS 14.4 DME and hold, continue climb-in-hold to 4000.

ATIS <b>132.65</b>	SANTA BARBARA APP CON★ <b>120.55 319.15</b> (151°-329°) <b>125.4 291.1</b> (330°-150°)	SANTA BARBARA TOWER★ <b>119.7</b> (CTAF) <b>0 254.35</b>	GND CON <b>121.7</b>	CLNC DEL <b>132.9</b>	UNICOM <b>122.95</b>
-----------------------	--	---	-------------------------	--------------------------	-------------------------



	HABUT I-SBA [12.8]	GOYED INT I-SBA [9.5]	NAPPS INT I-SBA [6.7]	GOLET I-SBA [2.7] I-SBA [1.2]
	3500	2600	1800	1800
	GS 3.00° TCH 52			
	3.4 NM	2.8 NM	3.9 NM	1.5
CATEGORY	A	B	C	D
S-ILS 7		303/40	290 (300-¾)	
S-LOC 7	560/40	547 (600-¾)	560/55	547 (600-1)
CIRCLING	800-1 786 (800-1)	840-1¼ 826 (900-1¼)	840-2½ 826 (900-2½)	1000-3 986 (1000-3)

ELEV 14 **D** TDZE 13

HIRL Rwy 7-25 **0**  
MIRL Rwy 15R-33L **0**  
REIL Rws 15R and 25 **0**

FAF to MAP 5.5 NM

Knots	60	90	120	150	180
Min:Sec	5:30	3:40	2:45	2:12	1:50

SW-3, 10 JUL 2025 to 07 AUG 2025

SW-3, 10 JUL 2025 to 07 AUG 2025