

APP CRS	Rwy Idg	5700
196°	TDZE	54
	Apt Elev	56

RNAV (RNP) Z RWY 20R

JOHN WAYNE/ORANGE COUNTY (SNA)

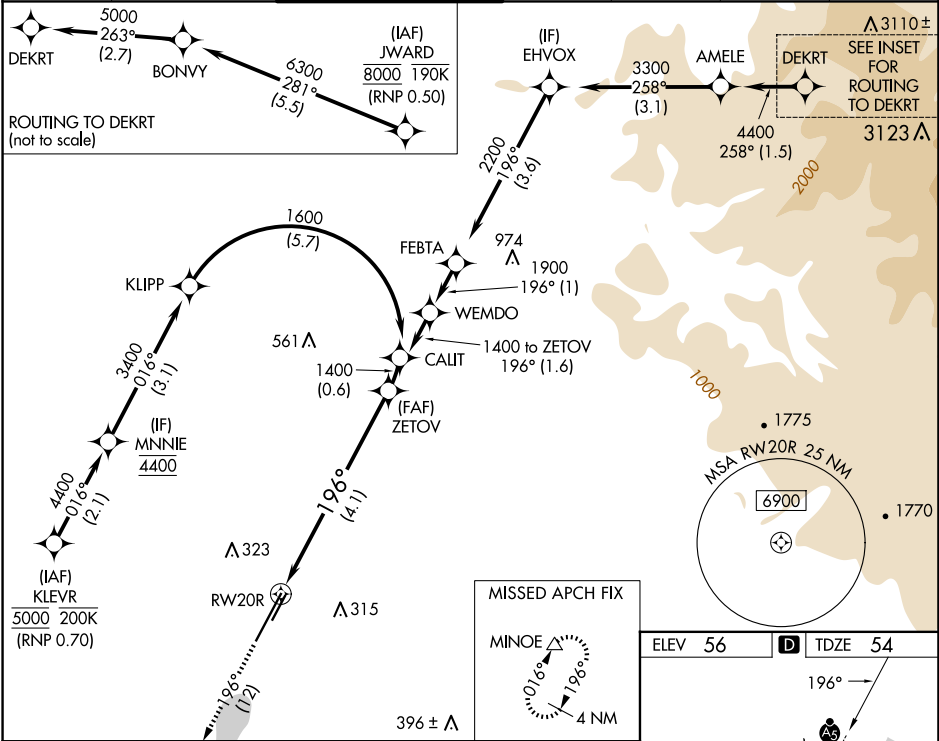
RNP AR APCH - GPS. Authorization required. From JWARD: min RNP 0.50. From KLEVR, RF, min RNP 0.70.

For uncompensated Baro-VNAV systems, procedure NA below 5°C or above 54°C.

MALSR

MISSED APPROACH: Climb to 3000 on track 196° to MINOE and hold, continue climb-in-hold.

D-ATIS	SOCAL APP CON	JOHN WAYNE TOWER ★	GND CON	CLNC DEL	CPDLC	UNICOM
126.0	121.3 263.1	126.8 (CTAF) 343.625	120.8	118.0		122.95



3000

↑

tr 196°

MINOE

△

VGSI and RNAV glidepath not coincident (VGSI Angle 3.00/TCH 68). See planview for multiple IF locations.

ZETOV

1400

GP 3.00°

TCH 51

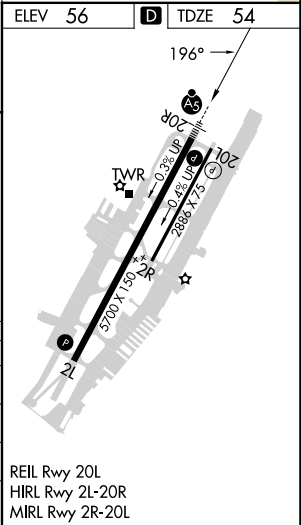
RWY 20R

196°

4.1 NM

CATEGORY	A	B	C	D
RNP 0.11 DA		376/26	322 (400-½)	
RNP 0.15 DA		562/55	508 (600-1)	
RNP 0.30 DA		618-1¼	564 (600-1¼)	

AUTHORIZATION REQUIRED



SW-3, 10 JUL 2025 to 07 AUG 2025

SW-3, 10 JUL 2025 to 07 AUG 2025