


ILS or LOC RWY 20R  
JOHN WAYNE/ORANGE COUNTY (SNA)

**MISSED APPROACH:** Climb to 3000 on I-SNA LOC south course (196°) to MINOE INT/I-SNA 10.9 DME.

ALTERNATE MISSED  
APCH FIX

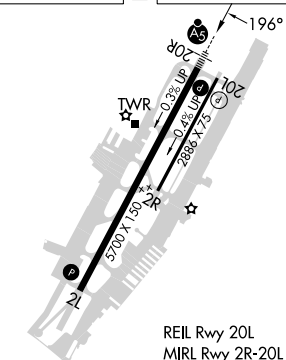
SEAL BEACH  
SU  $\frac{115.7}{\text{Chan 104}}$

Procedure NA for arrival  
on SLI VORTAC airway  
radials 058 CW 080.

SEAL BEACH  
115.7 SLI   
Chan 104

MISSED APCH FIX

ELEV	56	<b>D</b>	TDZE	54
------	----	----------	------	----



REIL Rwy 20L  
MIRL Rwy 2R-20L  
HIRL Rwy 21-20R

3000 ↑ I-SNA 5 crs (196°)		MINOE △		VGS1 and ILS glidepath not coincident (VGS1 Angle 3.00/TCH 68).				SAGER INT I-SNA <b>17.3</b>	
I-SNA 1.1		I-SNA 2.4		DYERS INT I-SNA 4.1		LEMON INT I-SNA <b>7.8</b>		SNAKE INT I-SNA 12.4	
1.3 NM		1.7 NM		3.7 NM		2.2 NM		2.4 NM	
1040		2200		2800		3400		016° → 4500 ← 196° 3500	
GS 3.00° TCH 51									
CATEGORY		A		B		C		D	
S-ILS 20R*		255/24 201 (200-½)							
S-LOC 20R		1040/40 986 (1000-¾)		1040/55 986 (1000-1)		1040-2½		986 (1000-2½)	
CIRCLING		1040-1¼ 984 (1000-1¼)		1040-1½ 984 (1000-1½)		1040-3 984 (1000-3)		1180-3 1124 (1200-3)	
DYERS FIX MINIMUMS (DUAL VOR RECEIVERS OR DME REQUIRED)									
S-LOC 20R		460/24 406 (500-½)		460/40		406 (500-¾)			
CIRCLING		640-1 584 (600-1)		840-2¼ 784 (800-2¼)		1180-3 1124 (1200-3)			