
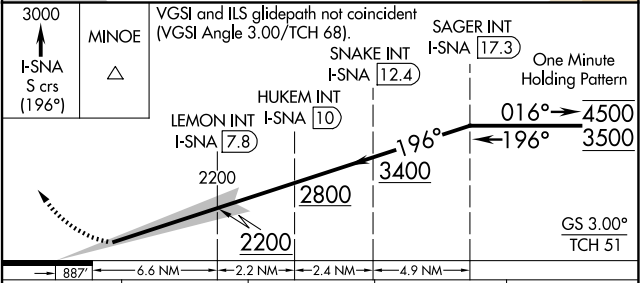
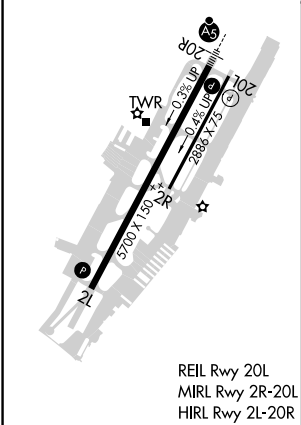
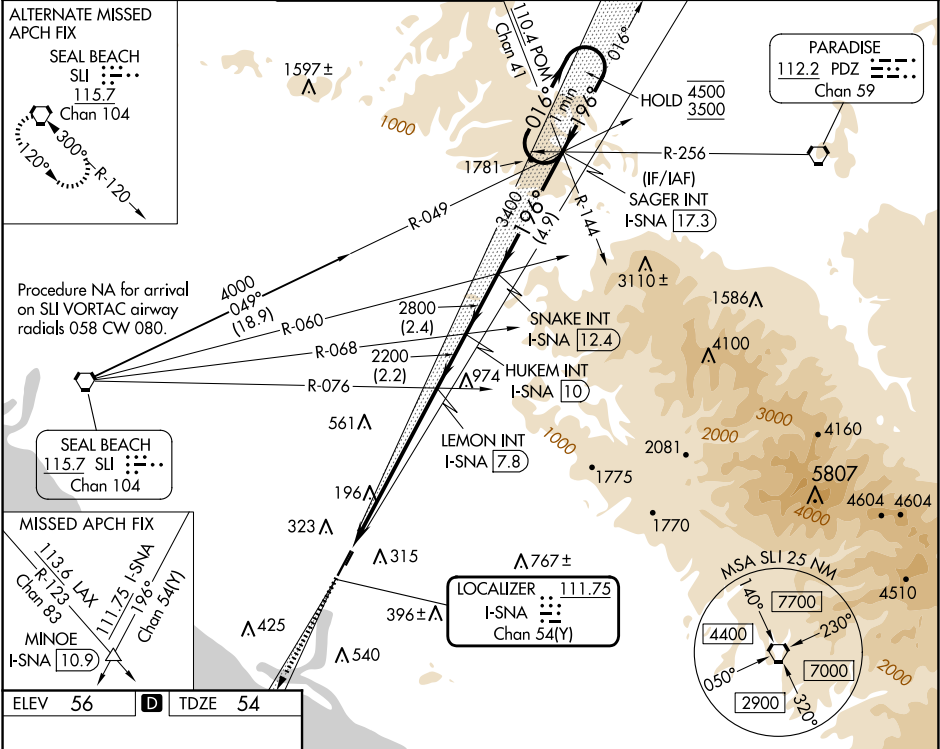


LOC/DME I-SNA 111.75 Chan 54(Y)	APP CRS 196°	Rwy Ldg TDZE Apt Elev	5700 54 56
---	------------------------	-----------------------------	---------------------------------------

ILS RWY 20R (SA CAT I)
JOHN WAYNE/ORANGE COUNTY (SNA)

Requires specific OPSPEC, MSPEC, or LOA approval. Procedure NA when tower closed.		MALSR 	MISSED APPROACH: Climb to 3000 on I-SNA LOC south course (196°) to MINOE INT/I-SNA 10.9 DME.			
D-ATIS 126.0	SOCAL APP CON 121.3 263.1	JOHN WAYNE TOWER ★ 126.8 (CTAF) 343.625	GND CON 120.8	CLNC DEL 118.0	CPDLC	UNICOM 122.95



CATEGORY	A	B	C	D
S-ILS 20R	RA 201/14 167 DA 221			
SA CATEGORY I ILS - SPECIAL AIRCREW & AIRCRAFT CERTIFICATION REQUIRED				