



SAN FRANCISCO, CALIFORNIA

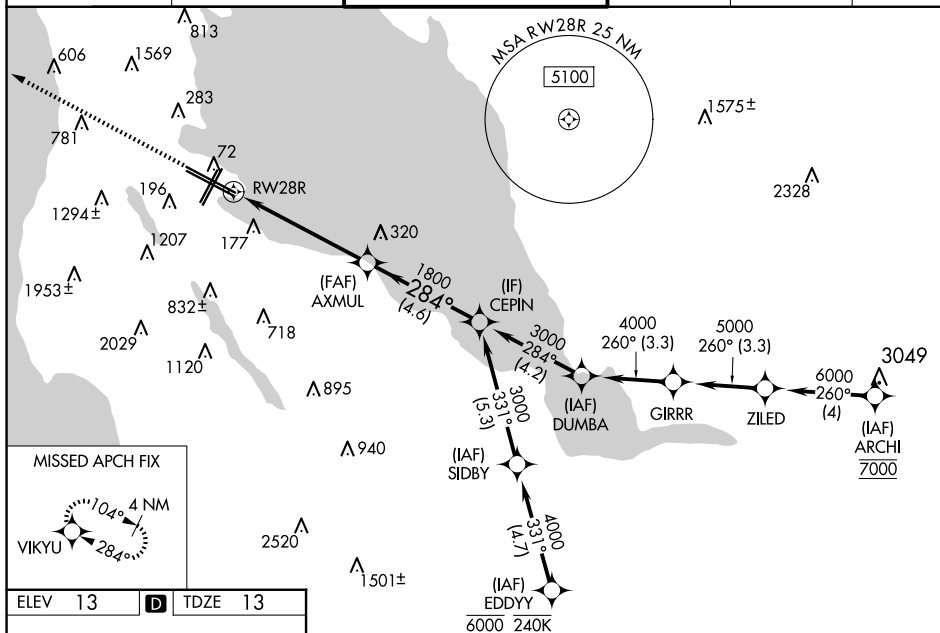
AL-375 (FAA)

25163

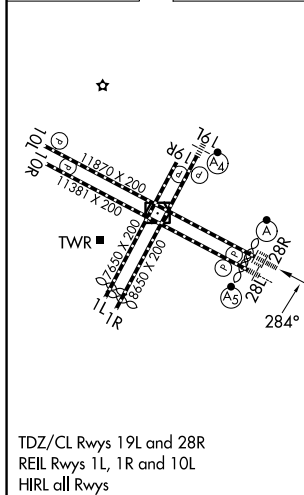
WAAS CH <b>48803</b> <b>W28A</b>	APP CRS <b>284°</b>	Rwy Ldg <b>11236</b> TDZE <b>13</b> Apt Elev <b>13</b>
--	------------------------	--

RNAV (GPS) Z RWY 28R  
SAN FRANCISCO INTL (SFO)

<b>RNP APCH - GPS.</b>  Circling NA to Rwys 10L, 10R, 19L, and 19R. Circling Rwy 1L, 1R NA at night. For uncompensated Baro-VNAV systems, LNAV/VNAV NA below 4°C or above 54°C. For Inop ALS, increase LNAV/VNAV all Cats visibility to 1 1/4 SM, increase LNAV Cat C/D visibility to 2 SM.		<b>ALSF-2</b> 	<b>MISSED APPROACH:</b> Climb to 3000 direct VIKYU and hold. *Missed approach requires minimum climb of 350 feet per NM to 1900; if unable to meet climb gradient, see RNAV (GPS) RWY 28L.			
<b>D-ATIS</b> <b>113.7 115.8</b> <b>118.85</b>	<b>NORCAL APP CON</b> <b>134.5 338.2</b>	<b>SAN FRANCISCO TOWER</b> <b>120.5 269.1</b>		<b>GND CON</b> <b>121.8</b>	<b>CLNC DEL</b> <b>118.2</b>	<b>CPDLC</b>



ELEV 13	<b>D</b>	TDZE 13
---------	----------	---------



VGS and RNAV glidepath not coincident  
(VGS Angle 3.00/TCH 68).

CEPIN

3000

AXMUL

1800

284°

1800

RW28R

2.1 NM to RW28R

2.1 NM

3.3 NM

4.6 NM

GP 3.00°  
TCH 55

CATEGORY	A	B	C	D
LPV DA*		213/18	200 (200-½)	
LNAV/VNAV	DA	642-1⅓	629 (700-1⅓)	
LNAV MDA	760/24 747 (800-½)	760/40 747 (800-¾)	760-1¾	747 (800-1¾)
<b>C</b> CIRCLING	760-1 747 (800-1)	1020-1½ 1007 (1100-1½)	1640-3 1627 (1700-3)	NA

SAN FRANCISCO, CALIFORNIA  
Amdt 8 31OCT24

37°37'N-122°23'W

SAN FRANCISCO INTL (SFO)

RNAV (GPS) Z RWY 28R

SW-2, 10 JUL 2025 to 07 AUG 2025