

SAN FRANCISCO, CALIFORNIA

AL-375 (FAA)

25163

WAAS CH 53533 W19B	APP CRS 194°	Rwy Ldg 7650 TDZE 11 Apt Elev 13
--	------------------------	---

RNAV (GPS) Y RWY 19R
SAN FRANCISCO INTL (SFO)

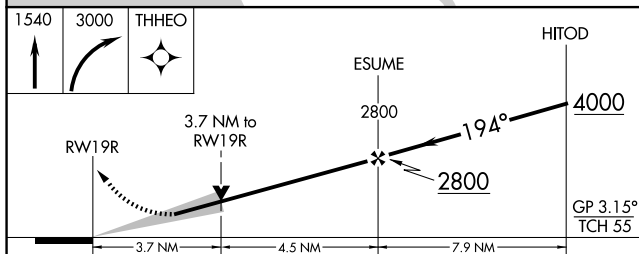
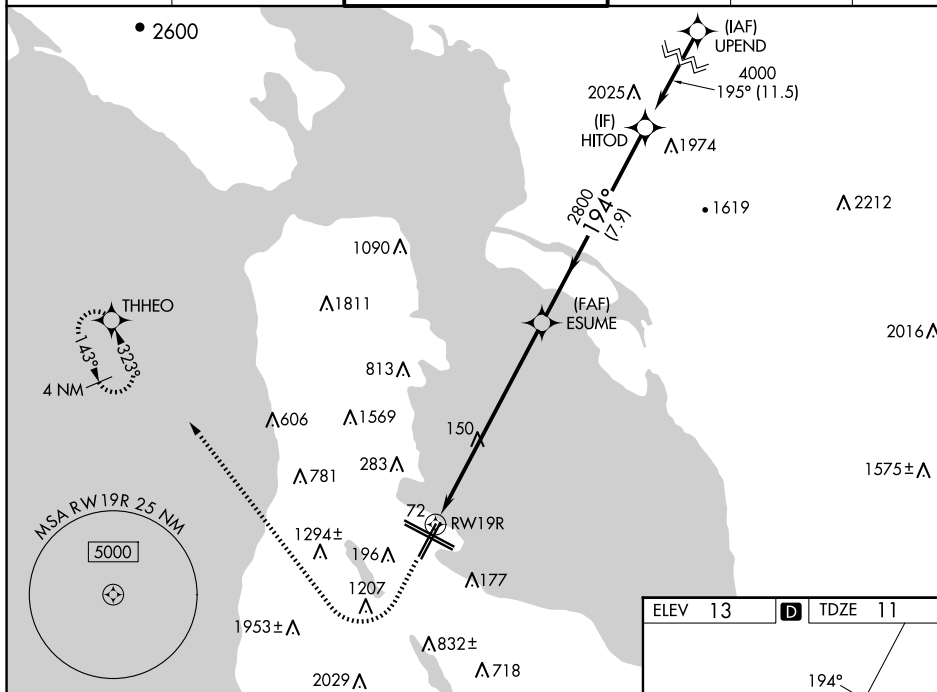
SAN FRANCISCO INTL (SFO)

RNP APCH-GPS.

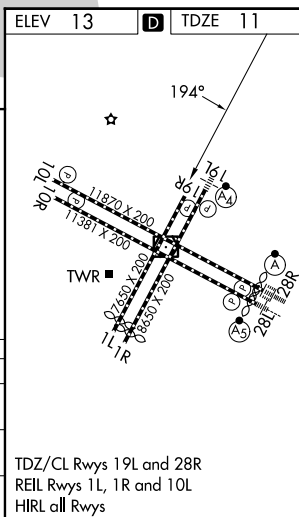
⚠ LNAV procedure NA during simultaneous operations. Use of FD or AP required during simultaneous operations. For uncompensated Baro-VNAV systems, LNAV/VNAV NA below 4°C or above 54°C. Simultaneous approach authorized. Simultaneous operations require use of vertical guidance; maintain last assigned altitude until established on glidepath. Simultaneous approach NA below 12°C (52°F).

MISSED APPROACH: Climb to 1540 then climbing right turn to 3000 direct THHEO and hold.

D-ATIS 113.7 115.8 118.85	NORCAL APP CON 134.5 338.2	SAN FRANCISCO TOWER 120.5 269.1	GND CON 121.8	CLNC DEL 118.2	CPDLC
---------------------------------	-------------------------------	------------------------------------	------------------	-------------------	-------



CATEGORY	A	B	C	D
LPV DA	1005-4 994 (1000-4)			
LNAV/ VNAV DA	878-2½ 867 (900-2½)			
LNAV MDA	1320-1¼ 1309 (1400-1¼)	1320-1½ 1309 (1400-1½)	1320-3	1309 (1400-3)



SAN FRANCISCO, CALIFORNIA
Amdt 4 30NOV23

37°37'N-122°23'W

SAN FRANCISCO INTL (SFO)
RNAV (GPS) Y RWY 19R

SAN FRANCISCO INTL (SFO)

SW-2, 10 JUL 2025 to 07 AUG 2025