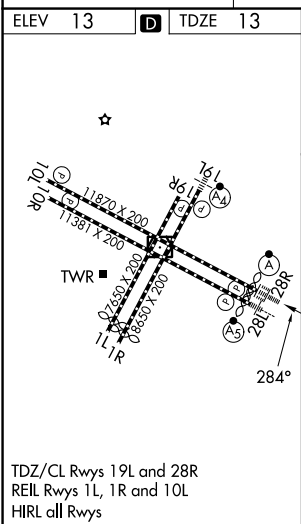
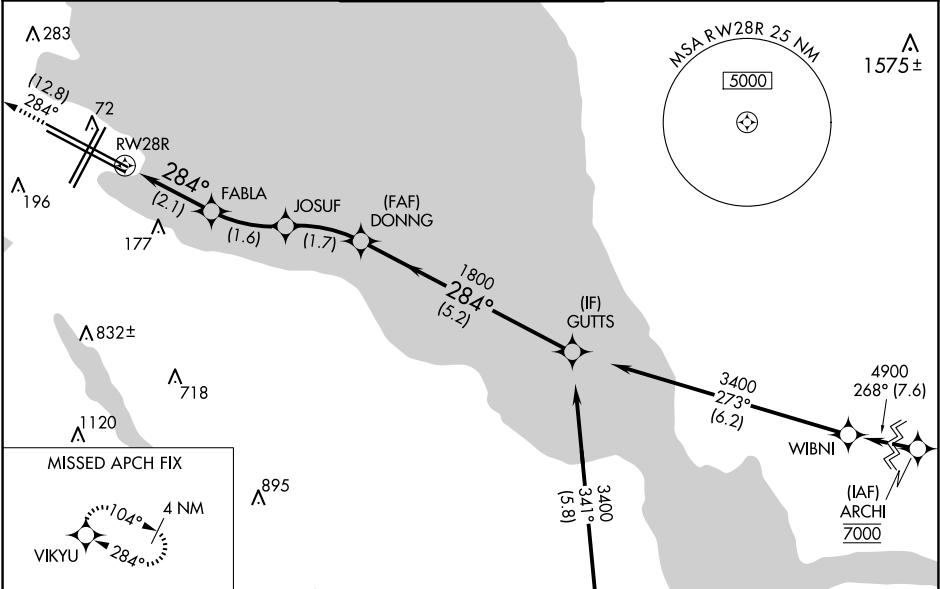


|         |          |       |
|---------|----------|-------|
| APP CRS | Rwy Ldg  | 11236 |
| 284°    | TDZE     | 13    |
|         | Apt Elev | 13    |

RNAV (RNP) Y RWY 28R  
SAN FRANCISCO INTL (SFO)

|  |        |   |
|--|--------|---|
| RNP AR APCH, RF required.  | ALSF-2 | MISSED APPROACH: Climb to 3000 on track 284° to VIKYU and hold.<br>* Missed approach requires minimum climb of 250 feet per NM to 1600.<br># Missed approach requires minimum climb of 350 feet per NM to 2100. |
| ▼ For uncompensated Baro-VNAV systems, procedure NA below 3°C or above 54°C. For inop ALS, increase RNP 0.11 all Cats visibility to RVR 4000 and RNP 0.30 all Cats visibility to RVR 4500. |        |   |

|                                 |                               |                                    |                  |                   |       |
|---------------------------------|-------------------------------|------------------------------------|------------------|-------------------|-------|
| D-ATIS<br>113.7 115.8<br>118.85 | NORCAL APP CON<br>134.5 338.2 | SAN FRANCISCO TOWER<br>120.5 269.1 | GND CON<br>121.8 | CLNC DEL<br>118.2 | CPDLC |
|---------------------------------|-------------------------------|------------------------------------|------------------|-------------------|-------|



|                        |        |   |                 |
|------------------------|--------|---|-----------------|
| 3000                   | VIKYU  | VGSI and RNAV glidepath not coincident (VGSI Angle 3.00/TCH 68) | GUTTS           |
| tr 284°                |        |   |                 |
|                        | FABLA  | JOSUF   | DONNG           |
|                        | 743    | 1264  | 1800            |
|                        | RW28R  |   | 284°            |
|                        |        |   | 1800            |
|                        |        |   | GP 3.00° TCH 55 |
|                        | 2.1 NM | 1.6 NM  | 1.7 NM          |
| CATEGORY               | A      | B   | C               |
| RNP 0.11 DA*           | 263/24 | 250 (300-½)   |                 |
| RNP 0.30 DA#           | 326/24 | 313 (400-½)   |                 |
| AUTHORIZATION REQUIRED |        |   |                 |

SW-2, 10 JUL 2025 to 07 AUG 2025

SW-2, 10 JUL 2025 to 07 AUG 2025