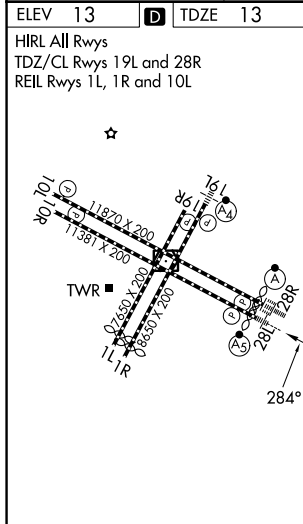


ILS or LOC RWY 28L
SAN FRANCISCO INTL (SFO)

MALSR

MISSED APPROACH: Climb to 4000 on SFO VOR/DME R-275 to OLYMM INT/SFO 15.4 DME and hold, continue climb-in-hold to 4000.
#Missed approach requires minimum climb of 330 feet per NM to 1600.

ALTERNATE MISSED APCH FIX



VGS and ILS glidepath not coincident (VGS Angle 2.85/TCH 67).
Use I-SFO DME when on the localizer course.

Diagram showing the ILS glidepath for SFO R-275. The glidepath is 28.5° TCH 53. Key points along the path are marked with I-SFO frequencies and distances:

- I-SFO 1.9 (1.3 NM)
- I-SFO 3.2 (2.1 NM)
- NEPIC I-SFO 5.3 (2.4 NM)
- DUYET I-SFO 7.7 (4.3 NM)
- HEMAN I-SFO 12 (5.0 NM)

The diagram also shows the VGS angle of 2.85° and the TCH of 53 feet.

SW-2, 10 JUL 2025 to 07 AUG 2025