

LOC/DME I-GWQ <b>111.7</b> Chan <b>54</b>	APP CRS <b>284°</b>	Rwy Ldg <b>11236</b> TDZE <b>13</b> Apt Elev <b>13</b>
---	------------------------	--

**ILS RWY 28R (CAT II & III)**  
SAN FRANCISCO INTL (SFO)

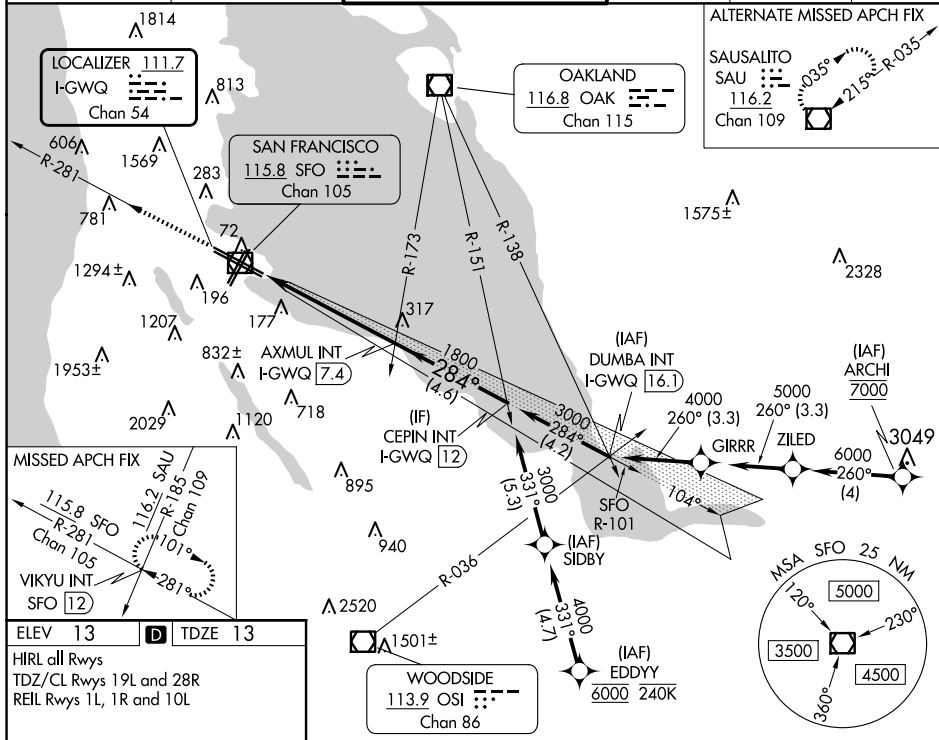
RNAV 1-GPS or RADAR required for procedure entry.

ALSF-2



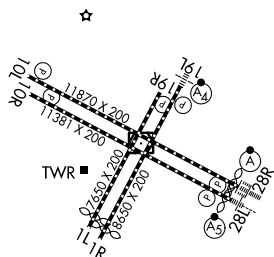
**\*Missed approach requires minimum climb of 350 feet per NM to 1900; if unable to meet climb gradient, see ILS or LOC RWY 28L.**

D-ATIS 113.7 115.8 118.85	NORCAL APP CON 134.5 338.2	SAN FRANCISCO TOWER 120.5 269.1	GND CON 121.8	CLNC DEL 118.2	CPDLC
---------------------------------	-------------------------------	------------------------------------	------------------	-------------------	-------



ELEV 13	<b>D</b>	TDZE 13
---------	----------	---------

HIRL all Rwy's  
TDZ/CL Rwy's 19L and 28R  
REIL Rwy's 1L, 1R and 10L



3000 ▲	VIKYU	VGSI and ILS glidepath not coincident (VGSI Angle 3.00/TCH 68).
-----------	-------	---

SFO R-281	INT
-----------	-----

Use I-GWQ DME when on the localizer course.

SFO R-281 |

Use I-GWQ DME when on the localizer course.

	1065"	5.4 NM	4.6 NM	
CATEGORY	A	B	C	D
S-ILS 28R*	CAT II RA 113/12 100 DA 113			
S-ILS 28R*	CAT III RVR 06			

CATEGORY II & III ILS - SPECIAL AIRCREW  
& AIRCRAFT CERTIFICATION REQUIRED