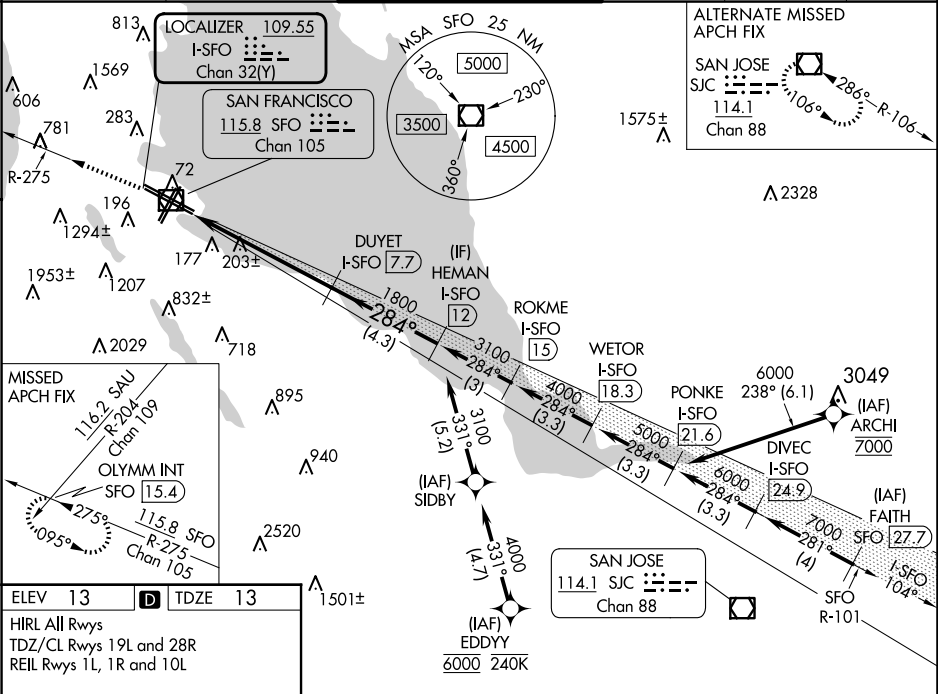


LOC/DME I-SFO <b>109.55</b> Chan <b>32(Y)</b>	APP CRS <b>284°</b>	Rwy Ldg TDZE <b>13</b> Apt Elev <b>13</b>	<b>ILS RWY 28L (SA CAT II)</b> SAN FRANCISCO INTL (SFO)	
---	------------------------	---	--	--

DME required. RNP APCH-GPS or RADAR required for procedure entry.	MALSR 	MISSED APPROACH: Climb to 4000 on SFO VOR/DME R-275 to OLYMM INT/SFO 15.4 DME and hold, continue climb-in-hold to 4000. *Misted approach requires minimum climb of 330 feet per NM to 1600.
Requires specific OPSPEC, MSPEC, or LOA approval.		

D-ATIS <b>113.7 115.8 118.85</b>	NORCAL APP CON <b>134.5 338.2</b>	SAN FRANCISCO TOWER <b>120.5 269.1</b>	GND CON <b>121.8</b>	CLNC DEL <b>118.2</b>	CPDLC
-------------------------------------	--------------------------------------	---	-------------------------	--------------------------	-------



--

**SA CAT II ILS - SPECIAL AIRCREW & AIRCRAFT CERTIFICATION REQUIRED**