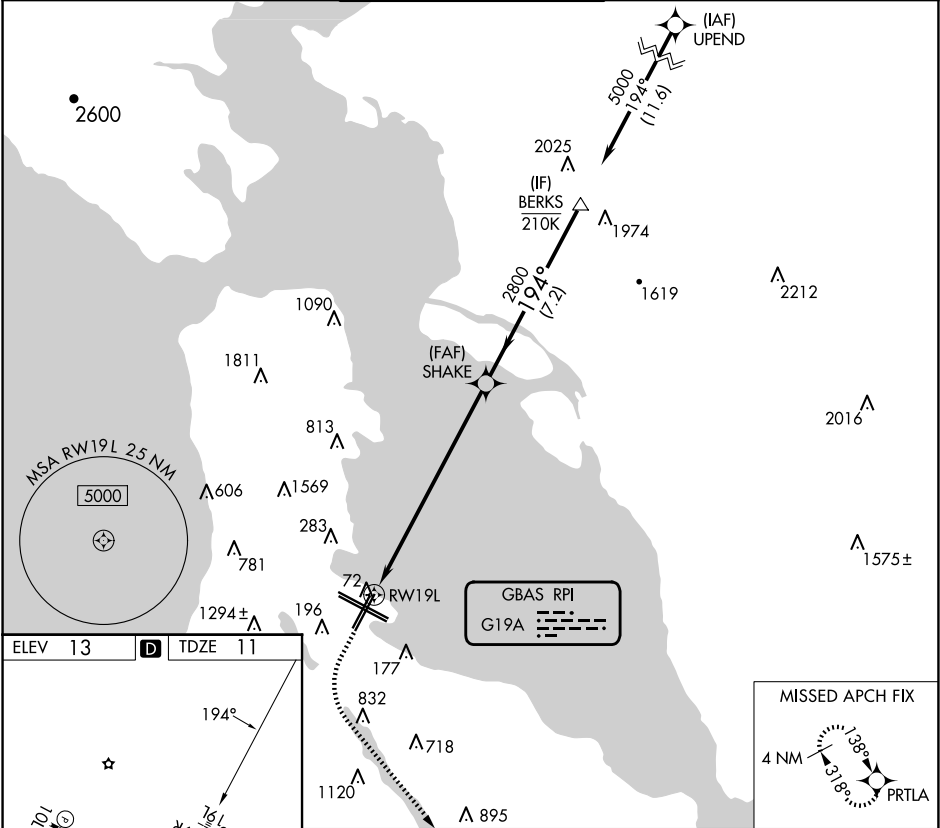


GBAS CH 21448 G19A	APP CRS 194°	Rwy Ldg TDZE 11 Apt Elev 13
--	------------------------	---

GLS RWY 19L
SAN FRANCISCO INTL (SFO)

RNP APCH-GPS.	MALSF	MISSED APPROACH: Climb to 920 then climbing left turn to 4000 direct PRTLA and hold. Missed approach requires minimum climb of 357 feet per NM to 2000.
Autopilot coupled approach NA below 293 feet. For inop ALS, increase GLS visibility to RVR 4500.		

D-ATIS 113.7 115.8 118.85	NORCAL APP CON 134.5 338.2	SAN FRANCISCO TOWER 120.5 269.1	GND CON 121.8	CLNC DEL 118.2	CPDLC
---	--------------------------------------	---	-------------------------	--------------------------	-------



ELEV 13	D	TDZE 11	MISSED APCH FIX 4 NM PRTLA			
TDZ/CL Rwy 19L and 28R REIL Rwy 1L, 1R and 10L HIRL all Rwy			920	4000	PRTLA	VGSI and GLS glidepath not coincident (VGSI Angle 3.00°/TCH 71).
			SHAKE 2800 194° 5000 GP 3.00° TCH 55			
			8.6 NM 7.2 NM			
CATEGORY			A	B	C	D
GLS DA			293/40 282 (300-¾)			