

VOR/DME RWY 29

VORTAC PGY 116.45 Chan 111(Y)	APCH CRS 279°	Rwy Idg TDZE Arpt Elev 7501 26 26
---	-------------------------	---

[USN]

NORTH ISLAND NAS (HALSEY FIELD) (KNZY)

⚠ * When ALS inop, increase CAT AB vis to 1 mile, CAT CD vis to 1¾ miles.
** Circling not authorized W of Rwy 18-36.
Circling authorized to Rwy 18 only.

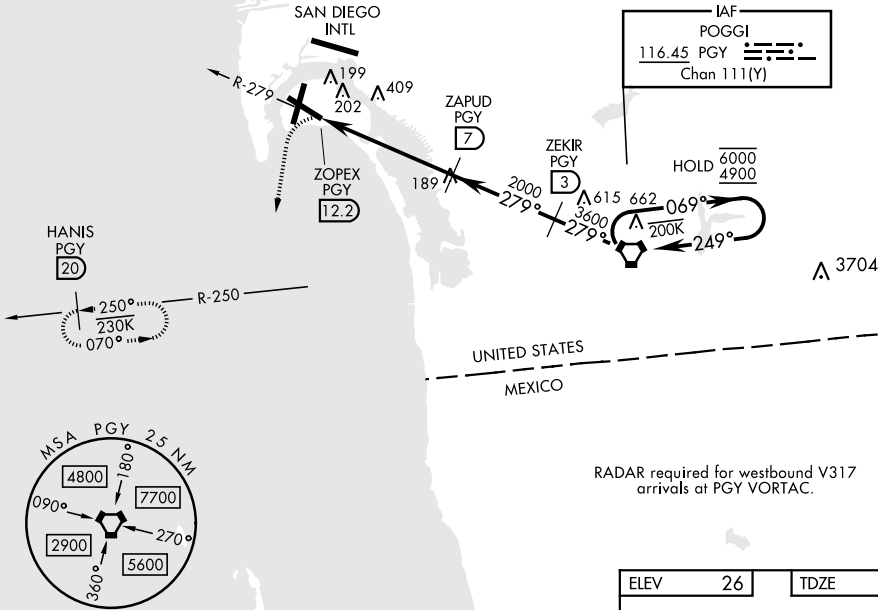
ALS-F-1
(A1)

MISSED APPROACH: Climbing left turn to 2000 via hdg 177° intercept PGY VORTAC R-250 to HANIS and hold.

ATIS★ 317.8	SOCAL APP CON 125.15 317.55	TOWER★ 135.1 336.4	GND CON 118.0 360.675	CLNC DEL 128.4 288.25	PAR/ASR
-----------------------	---------------------------------------	------------------------------	---------------------------------	---------------------------------	---------

Visibility reduction by helicopters not authorized.

CAUTION:
Final apch length 12.2 NM.
Final apch intersects RCL at 3733'.



RADAR required for westbound V317 arrivals at PGY VORTAC.

EMERG SAFE ALT 100 NM 13,700

2000
hdg 177°

PGY R-250

HANIS PGY 20

VGSI and descent angles not coincident (VGSI Angle 3.00/TCH 46).

ZEKIR PGY 3

PGY VORTAC

One Minute Holding Pattern

279°

069°

249°

6000

4900

3600

2000

3.72°

TCH 46

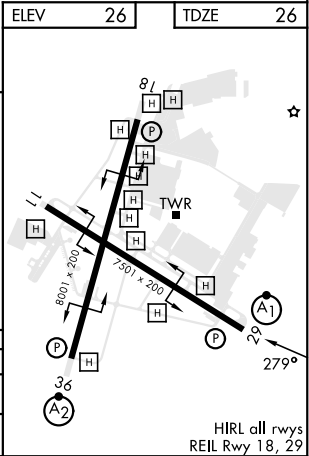
0.1

5.2 NM

4 NM

3 NM

CATEGORY	A	B	C	D
S-29 *	660-¾ 634 (700-¾)		660-1¾ 634 (700-1¾)	
CIRCLING **	660-1 634 (700-1)		NOT AUTHORIZED	



HIRL all rwys
REIL Rwy 18, 29

VOR/DME RWY 29

SW-3, 10 JUL 2025 to 07 AUG 2025

SW-3, 10 JUL 2025 to 07 AUG 2025